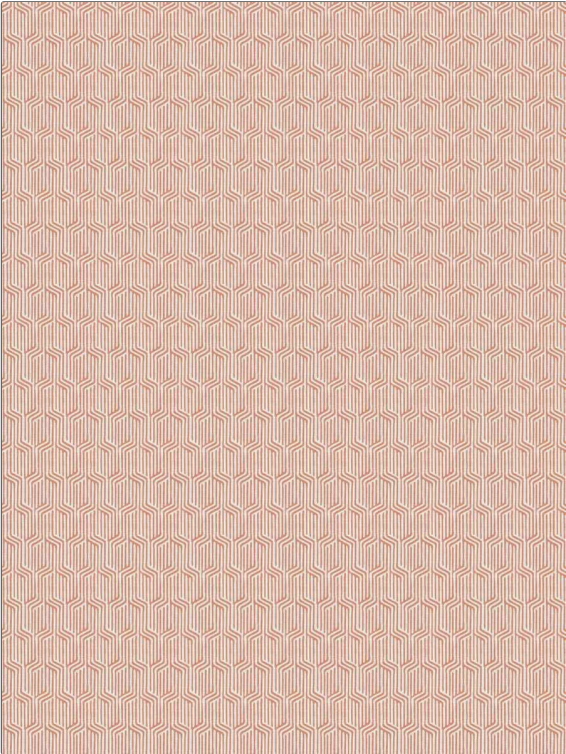


Fabric Product Details

PATTERN Minka
COLOR 03

BRAND	APPLICATION
Stroheim	Fabric
USES	CATEGORIES
Bedding, Drapery, Multipurpose, Upholstery	Handprint, Prints, Linen
COLORS	DESIGN TYPES
Coral / Peach	Geometric, Global / Ethnic, Print Pattern, Contemporary / Modern
SCALE	RAILROADED
Small	Not Railroaded



WIDTH	VERTICAL REPEAT	HORIZONTAL REPEAT	CONTENT
54.00 in (137.16 cm)	3.00 in (7.62 cm)	2.00 in (5.08 cm)	100% Linen
BACKING	FIRE CODES	DOUBLE RUBS	PRODUCT NUMBER
	UFAC Class I / NFPA 260	Exceeds 36,000 Double Rubs (Wyzenbeek Method)	1323003
COUNTRY	CLEANING CODES		
India	S		

ADDITIONAL PRODUCT NOTES

Ca Tb 117-2013, Exclusive Pattern