

# Fabric Product Details

**PATTERN** Minka  
**COLOR** 02

**BRAND**

**Stroheim**

**APPLICATION**

**Fabric**

**USES**

**Bedding, Drapery,  
Multipurpose, Upholstery**

**CATEGORIES**

**Handprint, Prints, Linen**

**COLORS**

**Light Blue**

**DESIGN TYPES**

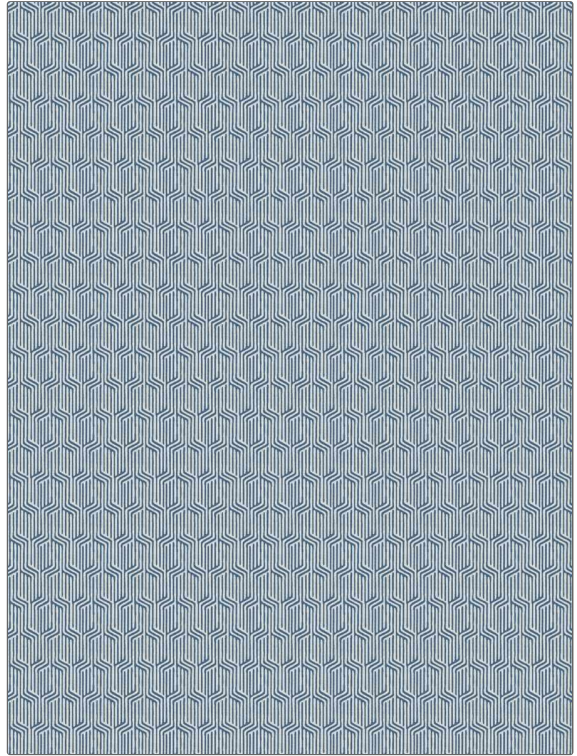
**Geometric, Global / Ethnic,  
Print Pattern,  
Contemporary / Modern**

**SCALE**

**Small**

**RAILROADED**

**Not Railroaded**



**WIDTH**

**54.00 in (137.16 cm)**

**VERTICAL REPEAT**

**3.00 in (7.62 cm)**

**HORIZONTAL REPEAT**

**2.00 in (5.08 cm)**

**CONTENT**

**100% Linen**

**BACKING**

**FIRE CODES**

**UFAC Class I / NFPA 260**

**DOUBLE RUBS**

**Exceeds 36,000 Double  
Rubs (Wyzenbeek Method)**

**PRODUCT NUMBER**

**1323002**

**COUNTRY**

**India**

**CLEANING CODES**

**S**

**ADDITIONAL PRODUCT NOTES**

**Ca Tb 117-2013, Exclusive Pattern**