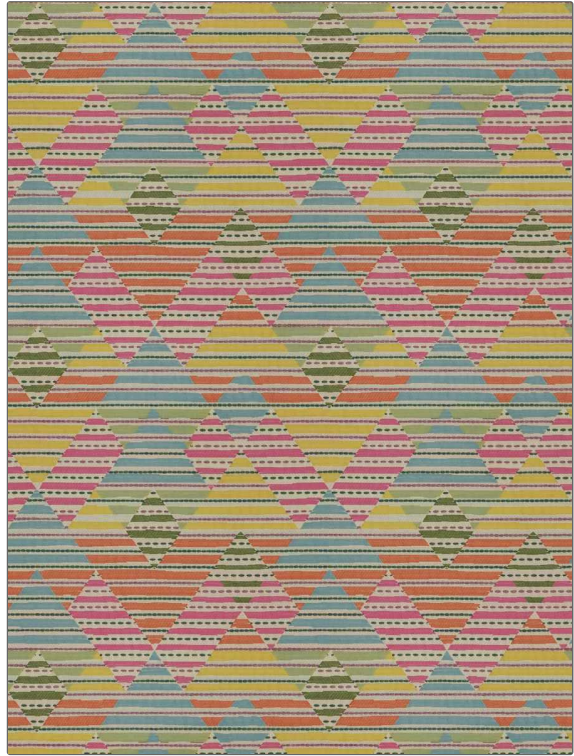


Fabric Product Details

PATTERN Mozu
COLOR Island

| | |
|-------------------------------------|---------------------------------------------------------------|
| BRAND | APPLICATION |
| Stroheim | Fabric |
| USES | CATEGORIES |
| Bedding, Drapery, Multipurpose | Wovens |
| BOOK | COLORS |
| Color Vol. II Sunkiss / Charcoal | Aqua / Teal, Orange / Spice, Coral / Peach, Pink, Multi-Color |
| DESIGN TYPES | SCALE |
| Geometric, Global / Ethnic, Novelty | Medium |
| RAILROADED | |
| Not Railroaded | |



| | | | |
|----------------------|-------------------------|-----------------------------------------------|--------------------------------------------------|
| WIDTH | VERTICAL REPEAT | HORIZONTAL REPEAT | CONTENT |
| 56.00 in (142.24 cm) | 15.50 in (39.37 cm) | 14.00 in (35.56 cm) | 54% Viscose, 25% Polyester, 16% Wool, 5% Acrylic |
| BACKING | FIRE CODES | DOUBLE RUBS | PRODUCT NUMBER |
| | UFAC Class I / NFPA 260 | Exceeds 12,000 Double Rubs (Wyzenbeek Method) | 1322001 |
| DATE BOOKED | COUNTRY | CLEANING CODES | |
| 05/2023 | Turkey | S | |

ADDITIONAL PRODUCT NOTES

Ca Tb 117-2013, Exclusive Pattern