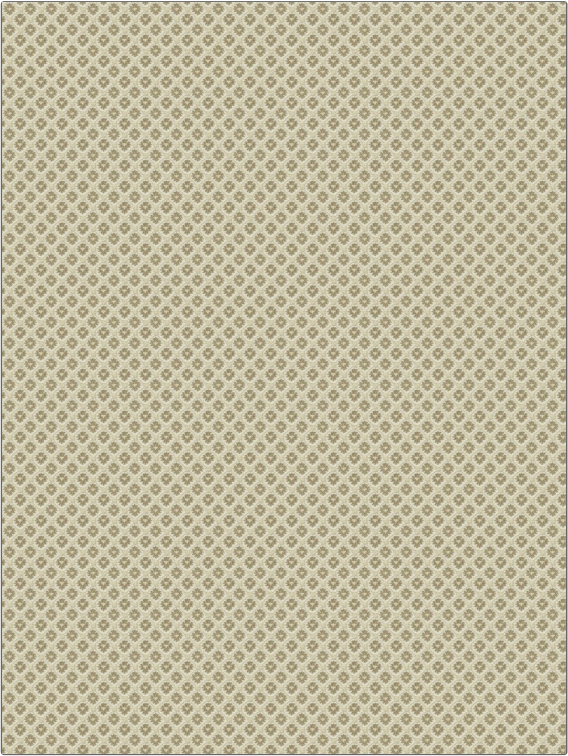


Fabric Product Details

PATTERN	Atlin
COLOR	05

BRAND	APPLICATION
Stroheim	Fabric
USES	CATEGORIES
Upholstery	Crypton Home, Wovens
COLORS	DESIGN TYPES
Taupe / Tan	Small Scale Woven, Diamond
SCALE	RAILROADED
Small	Not Railroaded



WIDTH	FINISH	VERTICAL REPEAT	HORIZONTAL REPEAT
53.00 in (134.62 cm)	Crypton Home	1.00 in (2.54 cm)	1.00 in (2.54 cm)
CONTENT	BACKING	FIRE CODES	DOUBLE RUBS
79% Rayon, 20% Cotton, 1% Nylon	100% Acrylic Backing	UFAC Class I / NFPA 260	Exceeds 51,000 Double Rubs (Wyzenbeek Method)
PRODUCT NUMBER	COUNTRY	CLEANING CODES	
1046405	USA	W	

ADDITIONAL PRODUCT NOTES
Crypton Home, Soil & Stain Repellent Finish, Pfas-Free, Anti-Bacterial / Anti-Microbial, 100% Acrylic Backing, Exclusive Pattern