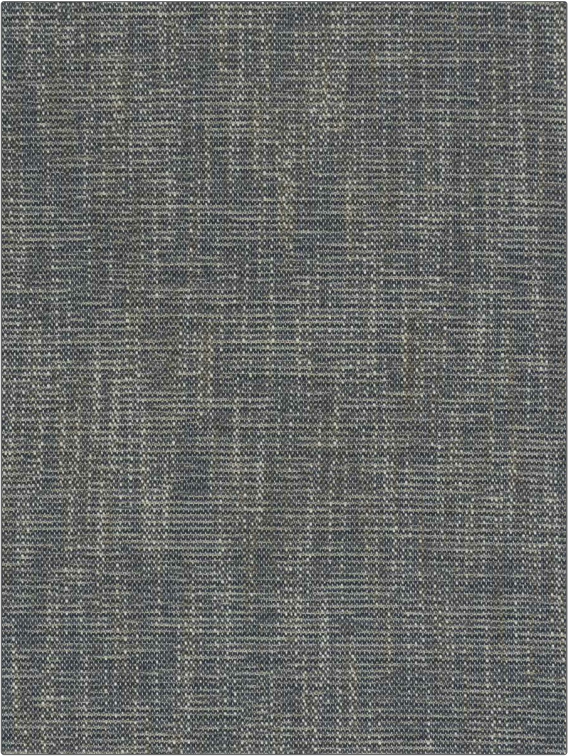


Fabric Product Details

PATTERN Chancellor
COLOR Navy

| | |
|--------------------------|--|
| BRAND | APPLICATION |
| Stroheim | Fabric |
| USES | CATEGORIES |
| Upholstery | Crypton Home, Easy To Clean, Wovens, Solids / Small Scale Patterns |
| BOOK | COLORS |
| Color: Bluebell - Laurel | Blue, Navy |
| DESIGN TYPES | RAILROADED |
| Solid, Texture Plain | Not Railroaded |



| | | | |
|--------------------------------------|----------------------|-------------------------|---|
| WIDTH | FINISH | VERTICAL REPEAT | HORIZONTAL REPEAT |
| 54.00 in (137.16 cm) | Crypton Home | 0.00 in (0.00 cm) | 0.00 in (0.00 cm) |
| CONTENT | BACKING | FIRE CODES | DOUBLE RUBS |
| 40% Polyester, 33% Cotton, 27% Rayon | 100% Acrylic Backing | UFAC Class I / NFPA 260 | Exceeds 63,000 Double Rubs (Wyzenbeek Method) |
| PRODUCT NUMBER | DATE BOOKED | COUNTRY | CLEANING CODES |
| 1046110 | 06/2021 | USA | W |

ADDITIONAL PRODUCT NOTES

Crypton Home, Soil & Stain Repellent Finish, Pfas-Free, Easy To Clean Finish, Ca Tb 117-2013, Anti-Bacterial / Anti-Microbial, 100% Acrylic Backing, Exclusive Pattern