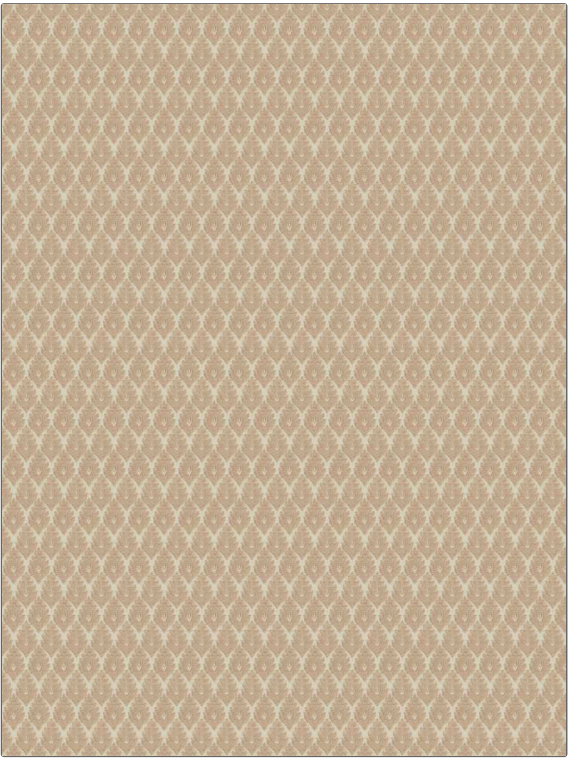


Fabric Product Details

| | |
|------------------|------------------------|
| PATTERN | Remus Leaf |
| COLOR | Rosewater |
| BRAND | APPLICATION |
| Stroheim | Fabric |
| USES | CATEGORIES |
| Upholstery | Crypton Home, Chenille |
| BOOK | COLORS |
| Costa Bungalow | Pink |
| DESIGN TYPES | SCALE |
| Leaves, Bargello | Small |
| RAILROADED | |
| Not Railroaded | |



| | | | |
|--------------------------|----------------------|-------------------------|---|
| WIDTH | FINISH | VERTICAL REPEAT | HORIZONTAL REPEAT |
| 57.00 in (144.78 cm) | Crypton Home | 2.30 in (5.84 cm) | 1.20 in (3.05 cm) |
| CONTENT | BACKING | FIRE CODES | DOUBLE RUBS |
| 76% Rayon, 24% Polyester | 100% Acrylic Backing | UFAC Class I / NFPA 260 | Exceeds 51,000 Double Rubs (Wyzenbeek Method) |
| PRODUCT NUMBER | DATE BOOKED | COUNTRY | CLEANING CODES |
| 1045502 | 10/2019 | USA | W |

| |
|--|
| ADDITIONAL PRODUCT NOTES |
| Crypton Home, Soil & Stain Repellent Finish, Pfas-Free, Anti-Bacterial / Anti-Microbial, 100% Acrylic Backing, Exclusive Pattern |