

# Fabric Product Details

**PATTERN** Zeavola  
**COLOR** 03

**BRAND**

**S. Harris**

**APPLICATION**

**Fabric**

**CATEGORIES**

**Outdoor, Wovens**

**COLORS**

**Blue, Taupe / Tan**

**DESIGN TYPES**

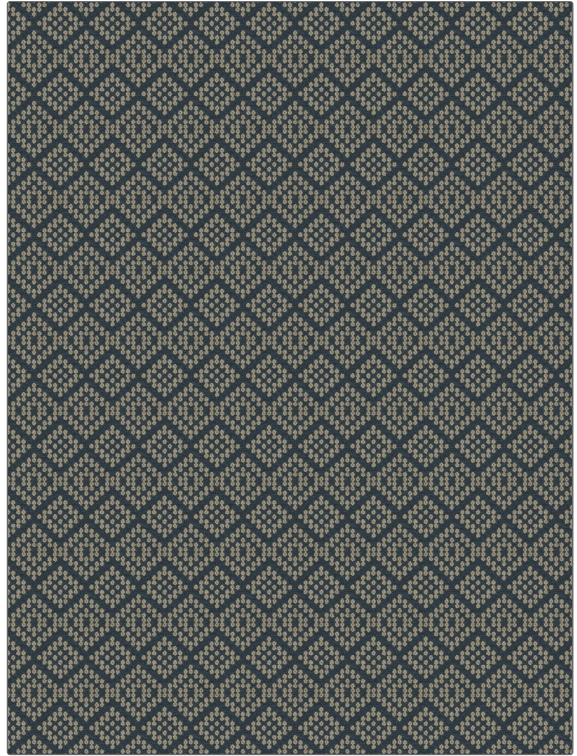
**Global / Ethnic,  
Contemporary / Modern**

**SCALE**

**Small**

**RAILROADED**

**Not Railroaded**



**WIDTH**

**56.00 in (142.24 cm)**

**VERTICAL REPEAT**

**3.20 in (8.13 cm)**

**HORIZONTAL REPEAT**

**2.50 in (6.35 cm)**

**CONTENT**

**100% Polyester**

**BACKING**

**FIRE CODES**

**UFAC Class I / NFPA 260**

**DOUBLE RUBS**

**Exceeds 51,000 Double  
Rubs (Wyzenbeek Method)**

**PRODUCT NUMBER**

**9665703**

**COUNTRY**

**Germany**

**CLEANING CODES**

**BLEACH CLEANABLE**

**ADDITIONAL PRODUCT NOTES**

**Q2, Pfas-Free, Indoor / Covered Outdoor, Ca Tb 117-2013, Bleach Cleanable, Exclusive Pattern**