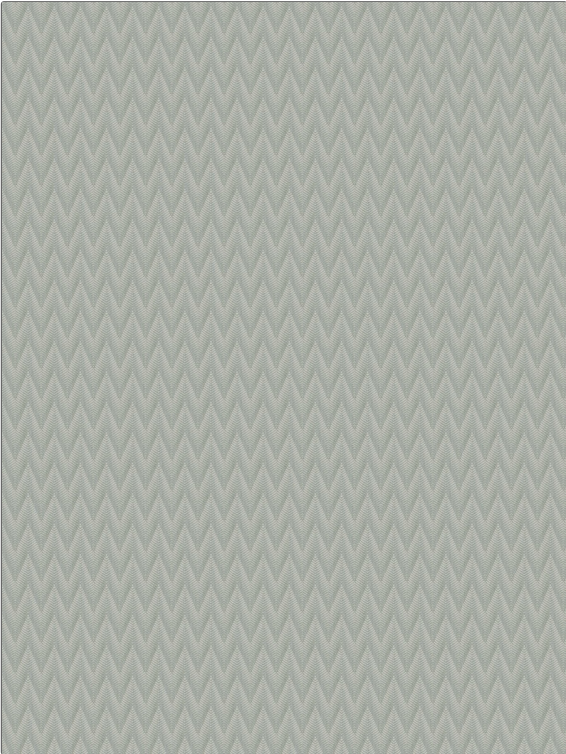


Fabric Product Details

PATTERN Desertbone
COLOR Mist

BRAND	APPLICATION
S. Harris	Fabric
USES	CATEGORIES
Upholstery	Outdoor, Wovens
COLORS	DESIGN TYPES
Aqua / Teal	Global / Ethnic, Herringbone, Small Scale Woven, Chevron, Contemporary / Modern
SCALE	RAILROADED
Medium	Not Railroaded



WIDTH	FINISH	VERTICAL REPEAT	HORIZONTAL REPEAT
54.00 in (137.16 cm)	Soil & Stain Repellent Finish	1.50 in (3.81 cm)	1.25 in (3.18 cm)
CONTENT	BACKING	FIRE CODES	DOUBLE RUBS
100% Solution Dye Acrylic		UFAC Class I / NFPA 260	Exceeds 10,000 Double Rubs (Wyzenbeek Method)
PRODUCT NUMBER	COUNTRY	CLEANING CODES	
9178702	USA	BLEACH CLEANABLE	

ADDITIONAL PRODUCT NOTES
 Soil & Stain Repellent Finish, Pfas-Free, Indoor / Outdoor, 2,000 Hours Light Fastness, Ca Tb 117-2013, Bleach Cleanable