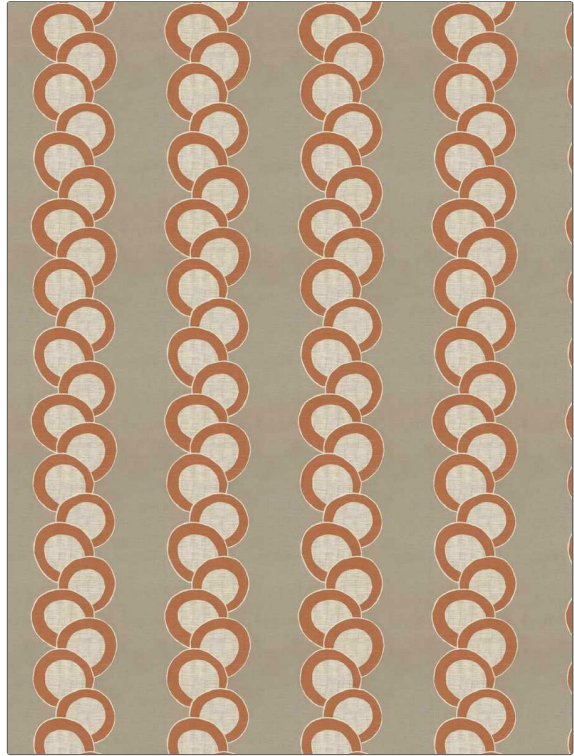


Fabric Product Details

PATTERN Roe Caviar
COLOR 03

BRAND	APPLICATION
S. Harris	Fabric
USES	CATEGORIES
Bedding, Drapery, Multipurpose	Wovens
COLORS	DESIGN TYPES
Coral / Peach	Jacquard Pattern
SCALE	RAILROADED
Medium	Not Railroaded



WIDTH	VERTICAL REPEAT	HORIZONTAL REPEAT	CONTENT
51.90 in (131.83 cm)	18.70 in (47.50 cm)	12.79 in (32.49 cm)	39% Polyester, 30% Viscose, 20% Cotton, 11% Acrylic
BACKING	FIRE CODES	DOUBLE RUBS	PRODUCT NUMBER
	UFAC Class I / NFPA 260	Exceeds 42,000 Double Rubs (Wyzenbeek Method)	9119303
COUNTRY	CLEANING CODES		
India	S		

ADDITIONAL PRODUCT NOTES

Ca Tb 117-2013, Exclusive Pattern