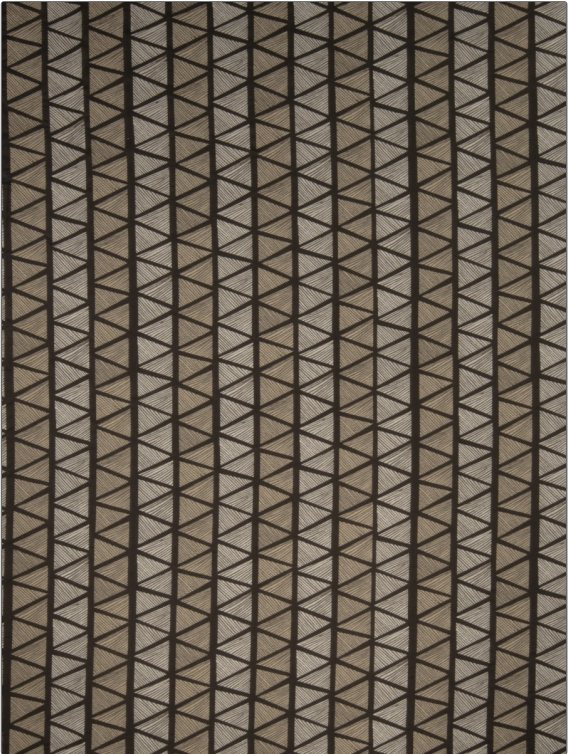


# Fabric Product Details

**PATTERN** Pololu Valley  
**COLOR** Volcano

<b>BRAND</b>	<b>APPLICATION</b>
S. Harris	Fabric
<b>USES</b>	<b>CATEGORIES</b>
Upholstery	Wovens
<b>COLORS</b>	<b>DESIGN TYPES</b>
Brown	Global / Ethnic, Diamond
<b>SCALE</b>	<b>RAILROADED</b>
Medium	Railroaded



<b>WIDTH</b>	<b>FINISH</b>	<b>VERTICAL REPEAT</b>	<b>HORIZONTAL REPEAT</b>
54.00 in (137.16 cm)	Soil & Stain Repellent Finish	13.50 in (34.29 cm)	20.00 in (50.80 cm)
<b>CONTENT</b>	<b>BACKING</b>	<b>FIRE CODES</b>	<b>DOUBLE RUBS</b>
68% Rayon, 32% Polyester		UFAC Class I, Passes NFPA 260	Exceeds 51,000 Double Rubs (Wyzenbeek Method)
<b>PRODUCT NUMBER</b>	<b>COUNTRY</b>	<b>CLEANING CODES</b>	
8541102	USA	S	

**ADDITIONAL PRODUCT NOTES**  
 Soil & Stain Repellent Finish, Hable Construction, Shown Railroaded, Exclusive Pattern