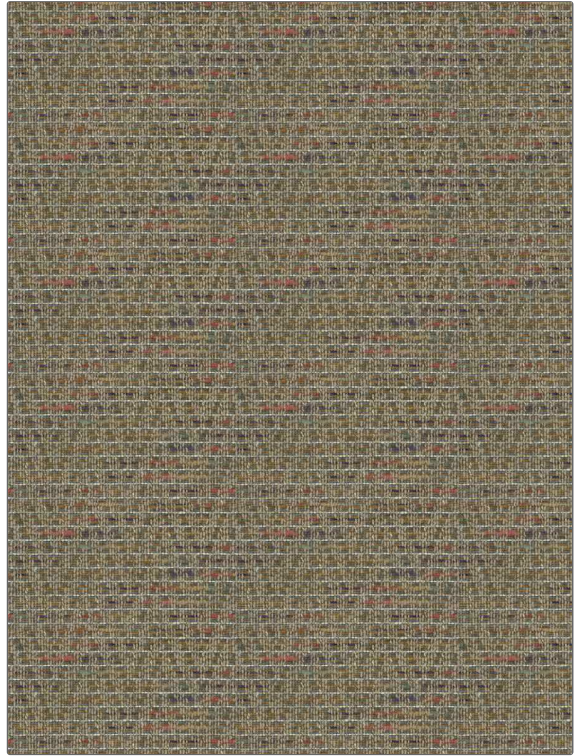


# Fabric Product Details

**PATTERN** Shen Herringbone  
**COLOR** 01

<b>BRAND</b>	<b>APPLICATION</b>
S. Harris	Fabric
<b>USES</b>	<b>CATEGORIES</b>
Bedding, Multipurpose, Upholstery	Wovens, Chenille
<b>COLORS</b>	<b>DESIGN TYPES</b>
Blue, Navy, Light Blue	Herringbone, Small Scale Woven, Contemporary / Modern
<b>SCALE</b>	<b>RAILROADED</b>
Small	Not Railroaded



<b>WIDTH</b>	<b>VERTICAL REPEAT</b>	<b>HORIZONTAL REPEAT</b>	<b>CONTENT</b>
55.00 in (139.70 cm)	0.00 in (0.00 cm)	3.54 in (8.99 cm)	35% Polyester, 30% Cotton, 23% Viscose, 6% Wool, 3% Nylon, 2% Linen, 1% Acrylic
<b>BACKING</b>	<b>FIRE CODES</b>	<b>DOUBLE RUBS</b>	<b>PRODUCT NUMBER</b>
	UFAC Class I / NFPA 260	Exceeds 60,000 Double Rubs (Wyzenbeek Method)	8528601
<b>COUNTRY</b>	<b>CLEANING CODES</b>		
Italy	S		

**ADDITIONAL PRODUCT NOTES**

Passes 28,000 Martindale Tst, Ca Tb 117-2013, Exclusive Pattern