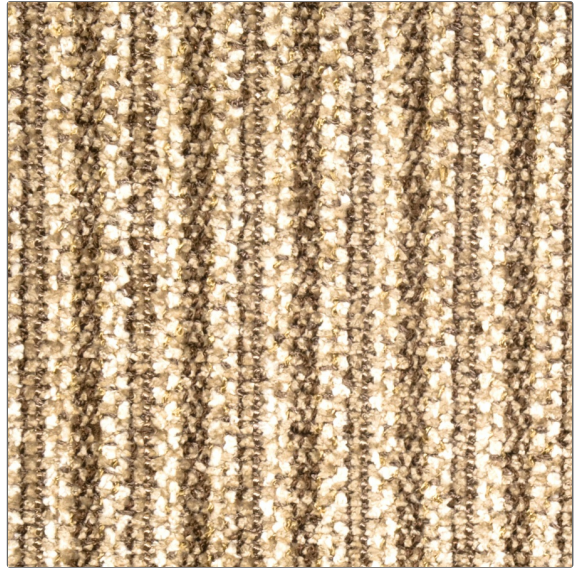


Fabric Product Details

PATTERN Targhee
COLOR Nutria



BRAND

S. Harris

APPLICATION

Fabric

USES

Upholstery

CATEGORIES

Wovens, Chenille

COLORS

Brown, Taupe / Tan

DESIGN TYPES

Texture Plain

RAILOADED

Railroaded

WIDTH

54.00 in (137.16 cm)

VERTICAL REPEAT

0.00 in (0.00 cm)

HORIZONTAL REPEAT

1.30 in (3.30 cm)

CONTENT

100% Rayon

BACKING

Knit Backed

FIRE CODES

UFAC Class I

DOUBLE RUBS

Exceeds 24,000 Double Rubs (Wyzenbeek Method)

PRODUCT NUMBER

8320102

COUNTRY

USA

CLEANING CODES

S

ADDITIONAL PRODUCT NOTES

Knit Backed, Shown Railroaded, Exclusive Pattern