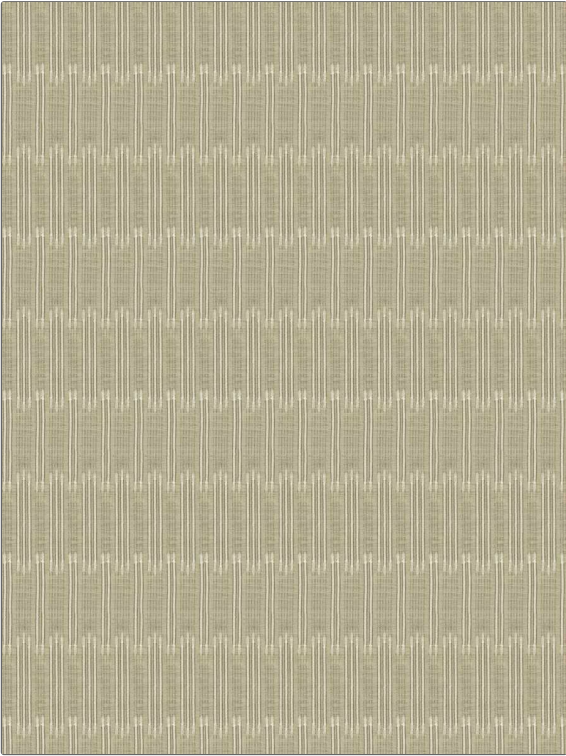


# Fabric Product Details

**PATTERN** **Gaga Stripe**  
**COLOR** **Ivory Cream**

<b>BRAND</b>	<b>APPLICATION</b>
S. Harris	Fabric
<b>USES</b>	<b>CATEGORIES</b>
Drapery	Sheer
<b>BOOK</b>	<b>COLORS</b>
Design En Rogue Artistry	Beige, Off White / Ivory
<b>DESIGN TYPES</b>	<b>RAILROADED</b>
Stripes, Contemporary / Modern	Railroaded



<b>WIDTH</b>	<b>VERTICAL REPEAT</b>	<b>HORIZONTAL REPEAT</b>	<b>CONTENT</b>
128.00 in (325.12 cm)	7.68 in (19.51 cm)	1.57 in (3.99 cm)	40% Linen, 30% Polyester, 20% Viscose, 10% Nylon
<b>BACKING</b>	<b>PRODUCT NUMBER</b>	<b>DATE BOOKED</b>	<b>COUNTRY</b>
	6556102	06/2021	Italy
<b>CLEANING CODES</b>			
S			

**ADDITIONAL PRODUCT NOTES**

Shown Railroaded, Exclusive Pattern