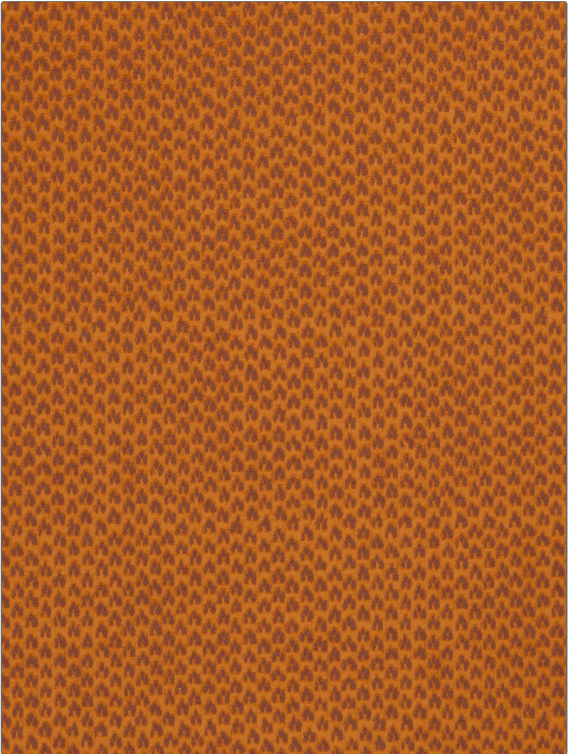


Fabric Product Details

PATTERN Crosby
COLOR Marmalade



| | |
|-------------------|--|
| BRAND | APPLICATION |
| S. Harris | Fabric |
| USES | CATEGORIES |
| Upholstery | Solids / Small Scale Patterns |
| COLORS | DESIGN TYPES |
| Orange / Spice | Small Scale Woven, Contemporary / Modern |
| RAILROADED | |
| Not Railroaded | |

| | | | |
|----------------------|-------------------------|---|---------------------------|
| WIDTH | VERTICAL REPEAT | HORIZONTAL REPEAT | CONTENT |
| 55.00 in (139.70 cm) | 0.00 in (0.00 cm) | 0.00 in (0.00 cm) | 58% Cotton, 42% Polyester |
| BACKING | FIRE CODES | DOUBLE RUBS | PRODUCT NUMBER |
| | UFAC Class I / NFPA 260 | Exceeds 50,000 Double Rubs (Wyzenbeek Method) | 5436703 |
| COUNTRY | CLEANING CODES | | |
| Italy | S | | |

ADDITIONAL PRODUCT NOTES

Exclusive Pattern