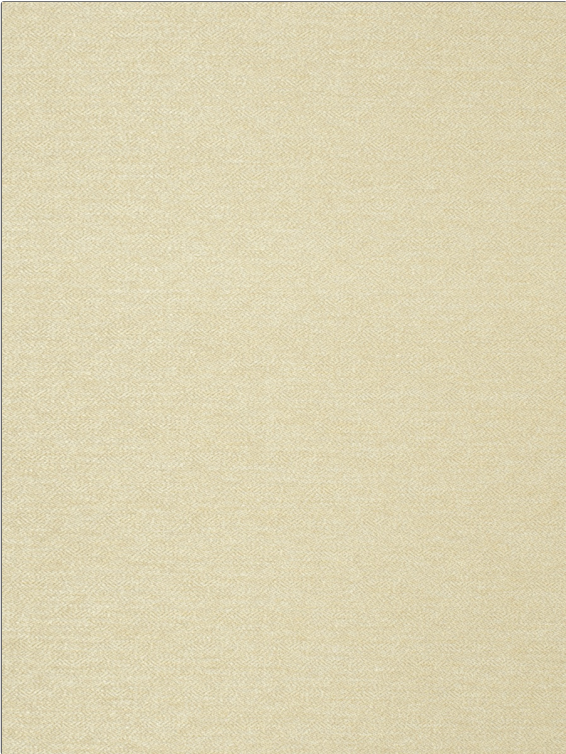


Fabric Product Details

PATTERN Mylar
COLOR Champagne



BRAND	APPLICATION
S. Harris	Fabric
USES	CATEGORIES
Upholstery	Wovens
BOOK	COLORS
Elements	Beige
DESIGN TYPES	RAILROADED
Solid, Contemporary / Modern	Not Railroaded

WIDTH	VERTICAL REPEAT	HORIZONTAL REPEAT	CONTENT
54.00 in (137.16 cm)	0.00 in (0.00 cm)	0.00 in (0.00 cm)	76% Polyester, 24% Acrylic
BACKING	FIRE CODES	DOUBLE RUBS	PRODUCT NUMBER
	UFAC Class I, Passes NFPA 260	Exceeds 51,000 Double Rubs (Wyzenbeek Method)	5321821
DATE BOOKED	COUNTRY	CLEANING CODES	
01/2020	Germany	S, BLEACH CLEANABLE, WASHABLE	

ADDITIONAL PRODUCT NOTES

1,500 Hours Light Fastness, Bleach Cleanable, Exclusive Pattern, Washable