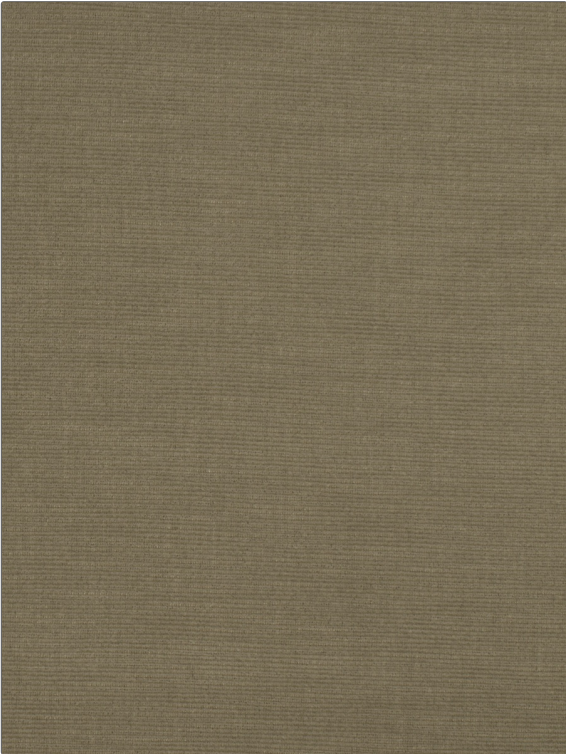


Fabric Product Details

PATTERN Charmant
COLOR Mushroom



BRAND	APPLICATION
S. Harris	Fabric
USES	CATEGORIES
Upholstery	Wool, Velvet / Grospoint, Wovens
BOOK	COLORS
Elements	Taupe / Tan
DESIGN TYPES	RAILROADED
Solid, Texture Plain	Not Railroaded

WIDTH	VERTICAL REPEAT	HORIZONTAL REPEAT	CONTENT
54.00 in (137.16 cm)	0.00 in (0.00 cm)	0.00 in (0.00 cm)	Pile: 51% Wool, 49% Acrylic, Backing: 58% Cotton, 42% Polyester
BACKING	FIRE CODES	DOUBLE RUBS	PRODUCT NUMBER
	UFAC Class I, Passes NFPA 260	Exceeds 115,000 Double Rubs (Wyzenbeek Method)	5321427
DATE BOOKED	COUNTRY	CLEANING CODES	
01/2020	Germany	S	

ADDITIONAL PRODUCT NOTES

Exclusive Pattern