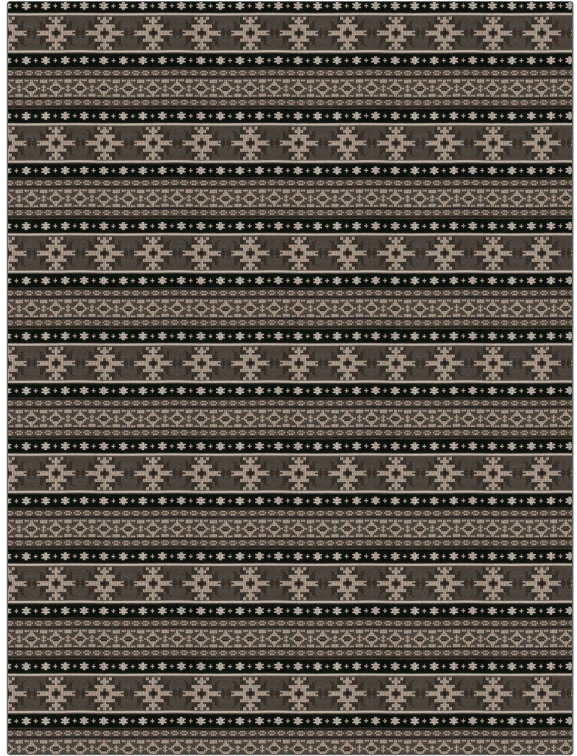


# Fabric Product Details

**PATTERN** Suarga  
**COLOR** 02

<b>BRAND</b>	<b>APPLICATION</b>
S. Harris	Fabric
<b>USES</b>	<b>CATEGORIES</b>
Upholstery	Outdoor, Wovens
<b>COLORS</b>	<b>DESIGN TYPES</b>
Black, Taupe / Tan	Global / Ethnic, Contemporary / Modern
<b>SCALE</b>	<b>RAILROADED</b>
Medium	Not Railroaded



<b>WIDTH</b>	<b>VERTICAL REPEAT</b>	<b>HORIZONTAL REPEAT</b>	<b>CONTENT</b>
56.00 in (142.24 cm)	10.50 in (26.67 cm)	4.70 in (11.94 cm)	78% Polyacrylic, 22% Polyester
<b>BACKING</b>	<b>FIRE CODES</b>	<b>DOUBLE RUBS</b>	<b>PRODUCT NUMBER</b>
	UFAC Class I / NFPA 260	Exceeds 51,000 Double Rubs (Wyzenbeek Method)	4636502
<b>COUNTRY</b>	<b>CLEANING CODES</b>		
Germany	BLEACH CLEANABLE		

**ADDITIONAL PRODUCT NOTES**

Q2, Pfas-Free, Passes 18,000 Martindale Tst, Indoor / Covered Outdoor, Ca Tb 117-2013, Bleach Cleanable, Exclusive Pattern