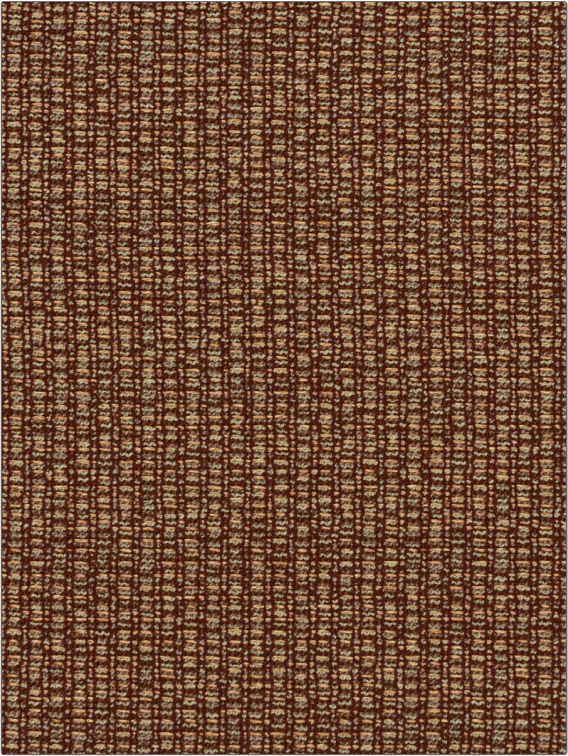


Fabric Product Details

PATTERN	Ziva Texture
COLOR	Rose Copper

BRAND	APPLICATION
S. Harris	Fabric
USES	CATEGORIES
Upholstery	Wovens, Solids / Small Scale Patterns
BOOK	COLORS
Elements	Orange / Spice, Red
DESIGN TYPES	RAILROADED
Texture Plain, Contemporary / Modern	Not Railroaded



WIDTH	VERTICAL REPEAT	HORIZONTAL REPEAT	CONTENT
56.00 in (142.24 cm)	0.00 in (0.00 cm)	0.00 in (0.00 cm)	55% Acrylic, 45% Polyester
BACKING	FIRE CODES	DOUBLE RUBS	PRODUCT NUMBER
	UFAC Class I / NFPA 260	Exceeds 100,000 Double Rubs (Wyzenbeek Method)	4128401
DATE BOOKED	COUNTRY	CLEANING CODES	
01/2020	Germany	BLEACH CLEANABLE	

ADDITIONAL PRODUCT NOTES
Q2, Pfas-Free, Passes 18,000 Martindale Tst, Indoor / Covered Outdoor, Ca Tb 117-2013, Bleach Cleanable, Exclusive Pattern