

Fabric Product Details

PATTERN **Taos Stripe**
COLOR **01**

BRAND

S. Harris

APPLICATION

Fabric

USES

Drapery

CATEGORIES

Wovens, Linen

COLORS

Blue

DESIGN TYPES

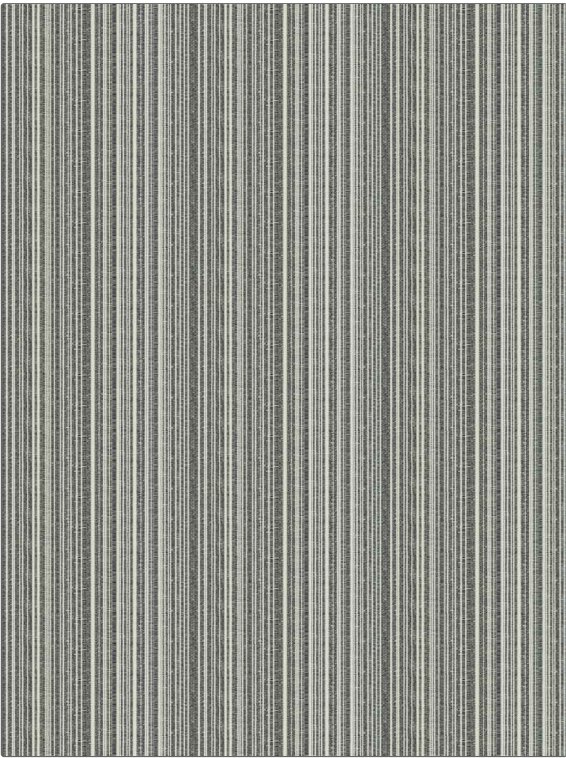
Stripes, Contemporary / Modern

SCALE

Small

RAILOADED

Railroaded



WIDTH

118.00 in (299.72 cm)

VERTICAL REPEAT

0.00 in (0.00 cm)

HORIZONTAL REPEAT

9.20 in (23.37 cm)

CONTENT

30% Linen, 27% Cotton,
23% Acrylic, 14% Wool, 6%
Polypropylene

BACKING

PRODUCT NUMBER

2239901

COUNTRY

Turkey

CLEANING CODES

S

ADDITIONAL PRODUCT NOTES

Shown Railroaded, Exclusive Pattern