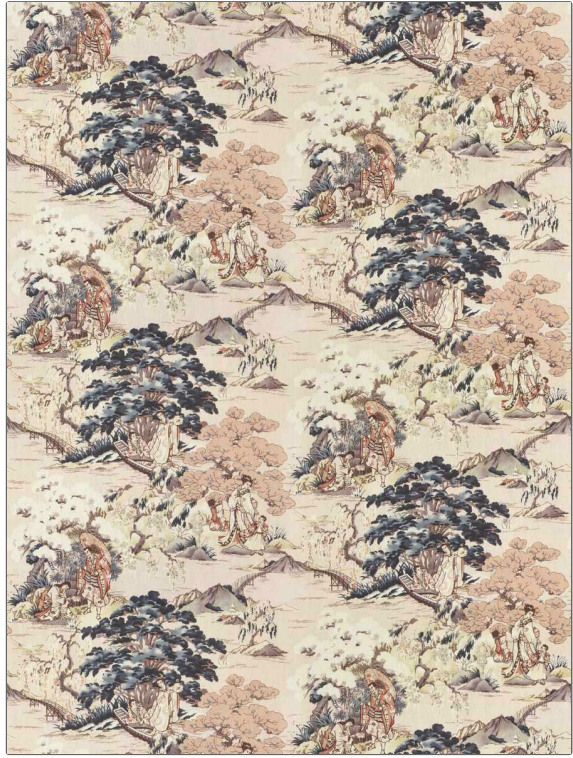


Fabric Product Details

PATTERN	Kami Toile
COLOR	Blossom
BRAND	APPLICATION
S. Harris	Fabric
USES	CATEGORIES
Bedding, Drapery, Multipurpose	Prints, Linen
BOOK	COLORS
East West	Blue, Lavender / Purple, Pink
DESIGN TYPES	SCALE
Global / Ethnic, Asian, Print Pattern, Toile	Large
RAILOADED	
Not Railroaded	



WIDTH	VERTICAL REPEAT	HORIZONTAL REPEAT	CONTENT
54.00 in (137.16 cm)	25.75 in (65.40 cm)	27.00 in (68.58 cm)	100% Linen
BACKING	FIRE CODES	DOUBLE RUBS	PRODUCT NUMBER
	UFAC Class I / NFPA 260	Exceeds 36,000 Double Rubs (Wyzenbeek Method)	1760901
DATE BOOKED	COUNTRY	CLEANING CODES	
09/2023	United Kingdom	S	

ADDITIONAL PRODUCT NOTES
Passes 25,000 Martindale Tst, In Compliance With Ca Prop 65, Half Drop Repeat, Exclusive Pattern