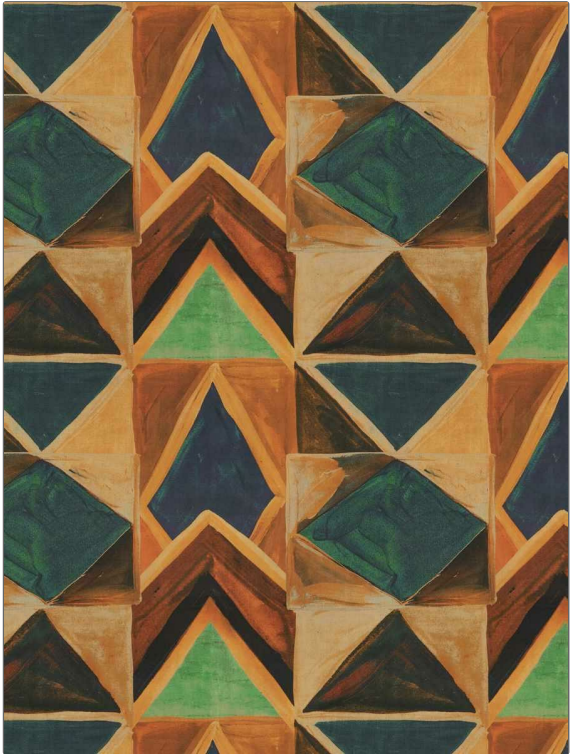


# Fabric Product Details

**PATTERN** Grand Trine  
**COLOR** 02

|                                    |   |
|------------------------------------|---|
| <b>BRAND</b>                       | <b>APPLICATION</b>  |
| S. Harris                          | Fabric  |
| <b>USES</b>                        | <b>CATEGORIES</b>   |
| Bedding, Drapery, Multipurpose     | Outdoor, Prints, Eco / Environment Plus                   |
| <b>COLORS</b>                      | <b>DESIGN TYPES</b>                                       |
| Green, Aqua / Teal, Orange / Spice | Geometric, Print Pattern, Contemporary / Modern, Abstract |
| <b>SCALE</b>                       | <b>RAILROADED</b>   |
| Large                              | Not Railroaded  |



|                       |                      |                         |   |
|-----------------------|----------------------|-------------------------|---|
| <b>WIDTH</b>          | <b>FINISH</b>        | <b>VERTICAL REPEAT</b>  | <b>HORIZONTAL REPEAT</b>                      |
| 51.00 in (129.54 cm)  | Easy To Clean Finish | 17.37 in (44.12 cm)     | 17.25 in (43.82 cm)                           |
| <b>CONTENT</b>        | <b>BACKING</b>       | <b>FIRE CODES</b>       | <b>DOUBLE RUBS</b>                            |
| 100% Acrylic          |                      | UFAC Class I / NFPA 260 | Exceeds 24,000 Double Rubs (Wyzenbeek Method) |
| <b>PRODUCT NUMBER</b> | <b>COUNTRY</b>       | <b>CLEANING CODES</b>   |   |
| 1543402               | Italy                | WS                      |   |

**ADDITIONAL PRODUCT NOTES**

Easy To Clean Finish, Passes 50,000 Martindale Tst, Oeko Tex Standard 100, Indoor / Covered Outdoor, 1,500 Hours Light Fastness, Ca Tb 117-2013, Exclusive Pattern, Eco / Environment Plus