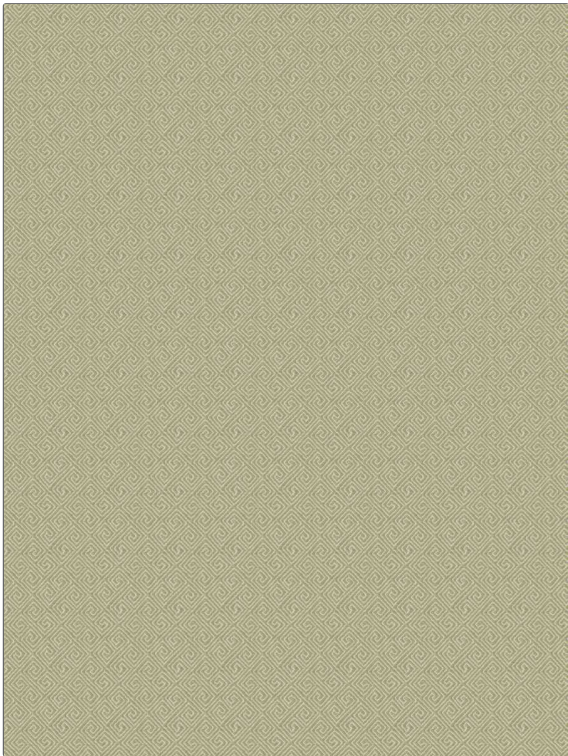


PATTERN Bowdoin Key
COLOR Pear

BRAND	APPLICATION
Fabricut	Fabric
USES	CATEGORIES
Bedding, Drapery, Multipurpose, Upholstery	Wovens
BOOK	COLORS
Chromatics Vol. XXVI (4 Books) Succulent	Light Green
DESIGN TYPES	SCALE
Small Scale Woven, Diamond	Small
RAILROADED	
Not Railroaded	



WIDTH	VERTICAL REPEAT	HORIZONTAL REPEAT	CONTENT
55.00 in (139.70 cm)	2.75 in (6.98 cm)	2.75 in (6.98 cm)	59% Polyester, 41% Cotton
BACKING	FIRE CODES	DOUBLE RUBS	PRODUCT NUMBER
	UFAC Class I / NFPA 260	Exceeds 100,000 Double Rubs (Wyzenbeek Method)	9814102
DATE BOOKED	COUNTRY	CLEANING CODES	
02/2019	India	S	

ADDITIONAL PRODUCT NOTES

Ca Tb 117-2013