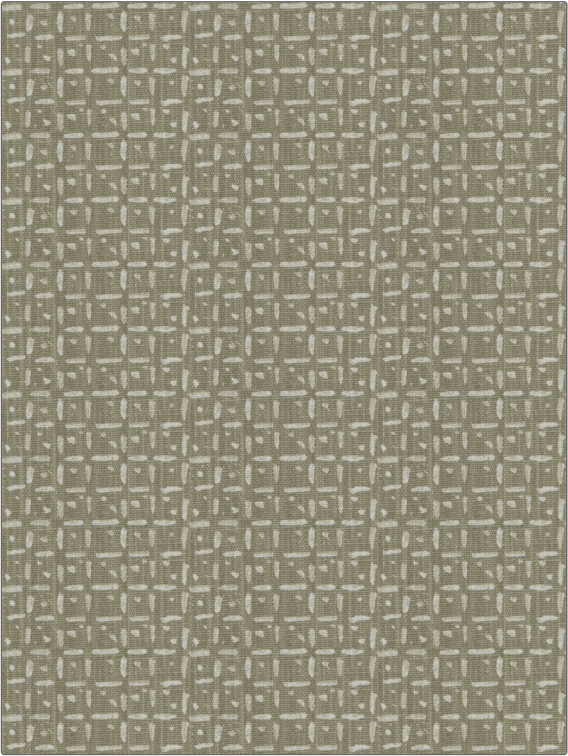


| | |
|---------|------------|
| PATTERN | Root Batik |
| COLOR | Latte |

| | |
|---|-------------|
| BRAND | APPLICATION |
| Fabricut | Fabric |
| USES | CATEGORIES |
| Bedding, Drapery, Multipurpose, Upholstery | Prints |
| BOOK | COLORS |
| Chromatics Vol. XXVI (4 Books) Quarry | Linen |
| DESIGN TYPES | SCALE |
| Global / Ethnic, Asian, Print Pattern, Check / Plaid | Small |
| RAILROADED | |
| Not Railroaded | |



| | | | |
|----------------------|--------------------|--|-----------------------|
| WIDTH | VERTICAL REPEAT | HORIZONTAL REPEAT | CONTENT |
| 54.00 in (137.16 cm) | 6.25 in (15.88 cm) | 9.00 in (22.86 cm) | 85% Cotton, 15% Linen |
| BACKING | FIRE CODES | DOUBLE RUBS | PRODUCT NUMBER |
| | UFAC Class I | Exceeds 24,000 Double Rubs (Wyzenbeek Method) | 9796602 |
| DATE BOOKED | COUNTRY | CLEANING CODES | |
| 02/2019 | Printed In USA | S | |

| |
|--------------------------|
| ADDITIONAL PRODUCT NOTES |
| Ca Tb 117-2013 |