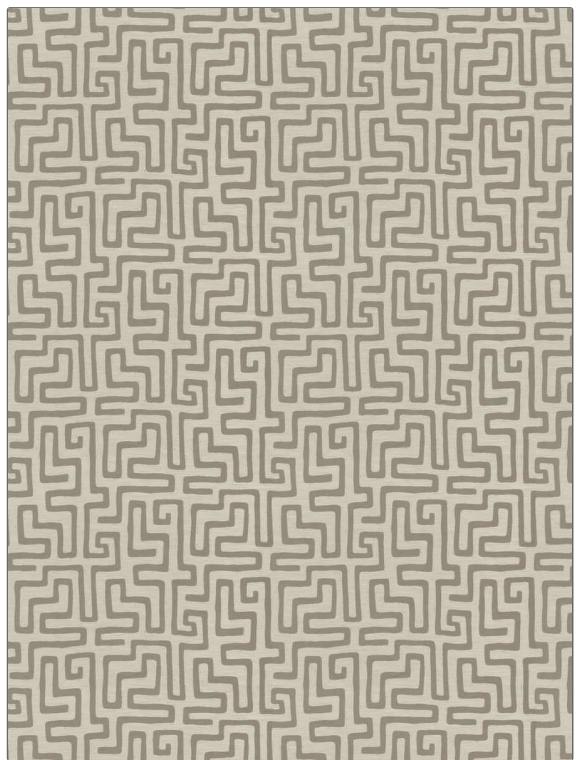


PATTERN	Ridgeline
COLOR	03

BRAND	APPLICATION
Fabricut	Fabric
USES	CATEGORIES
Upholstery	Crypton Home, Wovens
COLORS	DESIGN TYPES
Taupe / Tan	Global / Ethnic, Jacquard Pattern, Contemporary / Modern, Abstract
SCALE	RAILROADED
Large	Not Railroaded



WIDTH	FINISH	VERTICAL REPEAT	HORIZONTAL REPEAT
56.00 in (142.24 cm)	Crypton Home	24.50 in (62.23 cm)	25.25 in (64.14 cm)
CONTENT	BACKING	FIRE CODES	DOUBLE RUBS
52% Polyester, 27% Rayon, 21% Cotton	Acrylic / Latex Backing	UFAC Class I / NFPA 260	Exceeds 51,000 Double Rubs (Wyzenbeek Method)
PRODUCT NUMBER	COUNTRY	CLEANING CODES	
9661203	USA	W	

ADDITIONAL PRODUCT NOTES
Crypton Home, Pfas-Free, Ca Tb 117-2013, Acrylic / Latex Backing, Exclusive Pattern