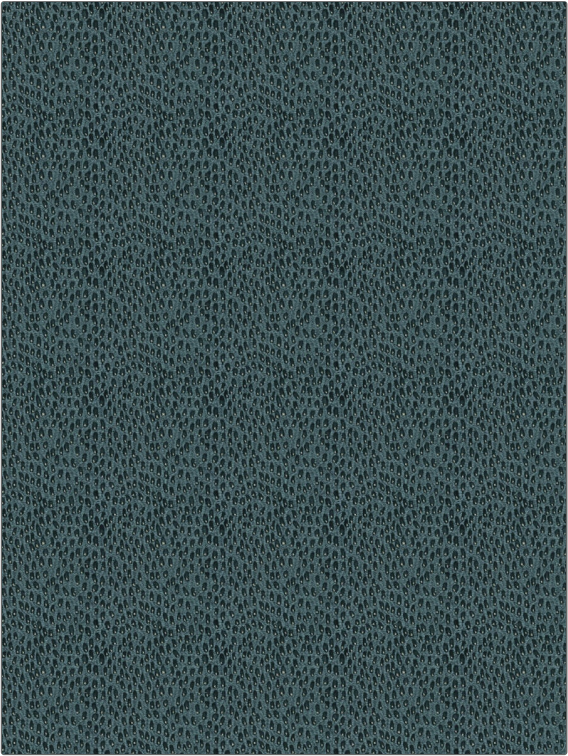


|         |         |
|---------|---------|
| PATTERN | Rye Dot |
| COLOR   | 02      |

|                                |  |
|--------------------------------|--|
| BRAND                          | APPLICATION                                |
| Fabricut                       | Fabric                                     |
| USES                           | CATEGORIES                                 |
| Bedding, Drapery, Multipurpose | Crewels / Embroideries                     |
| COLORS                         | DESIGN TYPES                               |
| Blue, Metallic                 | Embroidery, Global / Ethnic, Texture Plain |
| SCALE                          | RAILROADED                                 |
| Small                          | Not Railroaded                             |



|                      |                    |                    |  |
|----------------------|--------------------|--------------------|--|
| WIDTH                | VERTICAL REPEAT    | HORIZONTAL REPEAT  | CONTENT  |
| 47.00 in (119.38 cm) | 6.25 in (15.88 cm) | 5.75 in (14.60 cm) | Embroidery: 80% Cotton, 20% Zari, Base: 70% Viscose, 30% Linen |
| BACKING              | PRODUCT NUMBER     | COUNTRY            | CLEANING CODES   |
|                      | 0960202            | India              | S  |

|   |
|---|
| ADDITIONAL PRODUCT NOTES  |
| Exclusive Pattern, Embroidered Textiles Are Not, Guaranteed For Precise Color, Matching And Colorfastness., Color Placement Of Embroidery, May Vary. All Measurements, Quoted For Repeats Are, Approximate. |