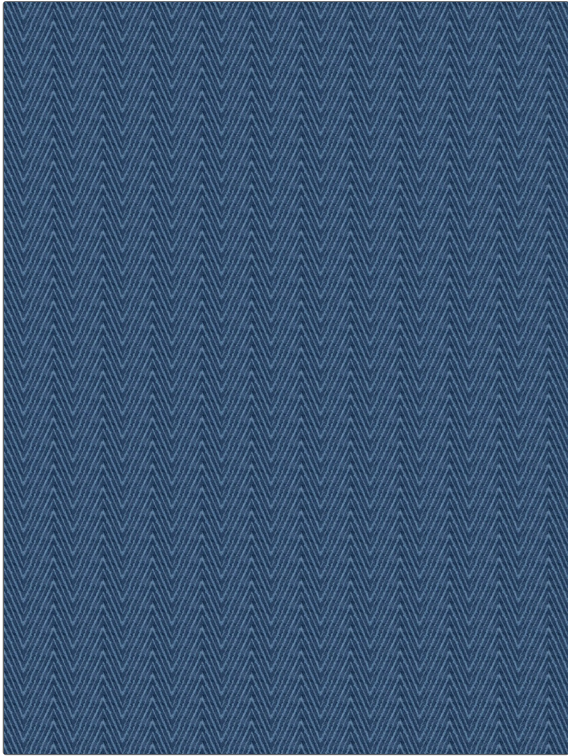


**PATTERN** Snow Cone  
**COLOR** 01



<b>BRAND</b>	<b>APPLICATION</b>
Fabricut	Fabric
<b>USES</b>	<b>CATEGORIES</b>
Bedding, Drapery, Multipurpose	Wovens, Chenille
<b>COLORS</b>	<b>DESIGN TYPES</b>
Blue	Herringbone, Chevron
<b>SCALE</b>	<b>RAILROADED</b>
Small	Not Railroaded

<b>WIDTH</b>	<b>VERTICAL REPEAT</b>	<b>HORIZONTAL REPEAT</b>	<b>CONTENT</b>
55.00 in (139.70 cm)	1.00 in (2.54 cm)	2.37 in (6.02 cm)	58% Polyester, 42% Rayon
<b>BACKING</b>	<b>FIRE CODES</b>	<b>DOUBLE RUBS</b>	<b>PRODUCT NUMBER</b>
	UFAC Class I	Exceeds 33,000 Double Rubs (Wyzenbeek Method)	9479401
<b>COUNTRY</b>	<b>CLEANING CODES</b>		
China	S		

**ADDITIONAL PRODUCT NOTES**

Ca Tb 117-2013