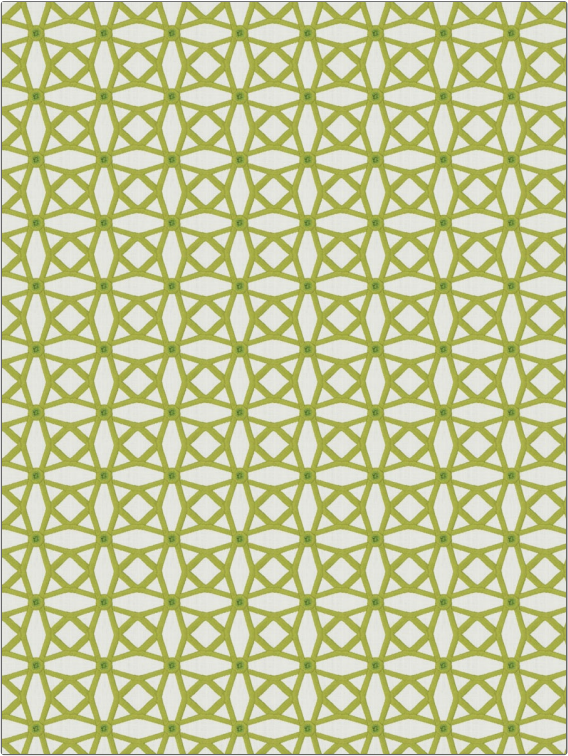


PATTERN	Tension Lattice
COLOR	Kiwi

BRAND	APPLICATION
Fabricut	Fabric
USES	CATEGORIES
Bedding, Drapery	Chenille
COLORS	DESIGN TYPES
Green	Embroidery, Lattice / Fretwork
SCALE	RAILROADED
Medium	Not Railroaded



WIDTH	VERTICAL REPEAT	HORIZONTAL REPEAT	CONTENT
52.00 in (132.08 cm)	3.00 in (7.62 cm)	3.25 in (8.26 cm)	Embroidery: 95% Cotton, 5% Viscose, Base: 25% Viscose, 25% Polyester, 25% Linen, 25% Cotton
BACKING	PRODUCT NUMBER	COUNTRY	CLEANING CODES
	9443708	India	S

ADDITIONAL PRODUCT NOTES
Exclusive Pattern, Embroidered Textiles Are Not, Guaranteed For Precise Color, Matching And Colorfastness., Color Placement Of Embroidery, May Vary. All Measurements, Quoted For Repeats Are, Approximate.