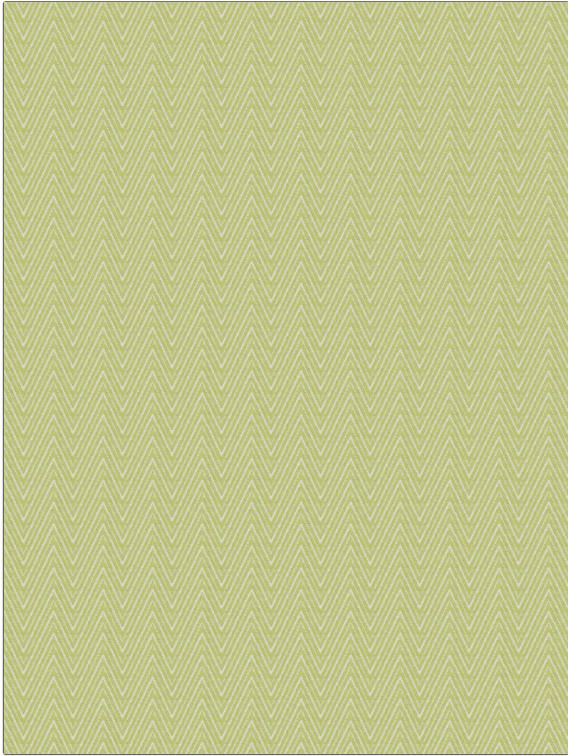


PATTERN Cates Chevron
COLOR Kiwi

BRAND	APPLICATION
Fabricut	Fabric
USES	CATEGORIES
Bedding, Drapery, Multipurpose	Wovens, Chenille
COLORS	DESIGN TYPES
Light Green	Herringbone, Chevron
SCALE	RAILROADED
Small	Not Railroaded



WIDTH	VERTICAL REPEAT	HORIZONTAL REPEAT	CONTENT
55.00 in (139.70 cm)	1.00 in (2.54 cm)	2.37 in (6.02 cm)	58% Polyester, 42% Rayon
BACKING	FIRE CODES	DOUBLE RUBS	PRODUCT NUMBER
	UFAC Class I	Exceeds 33,000 Double Rubs (Wyzenbeek Method)	9436504
COUNTRY	CLEANING CODES		
China	S		

ADDITIONAL PRODUCT NOTES

Ca Tb 117-2013