

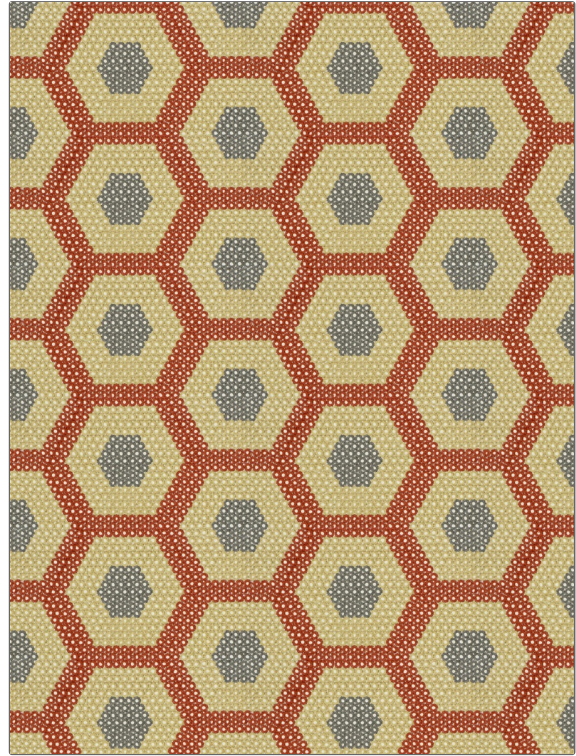
**PATTERN** Chemistry  
**COLOR** 01

**BRAND** Fabricut  
**APPLICATION** Fabric

**USES** Bedding, Drapery  
**CATEGORIES** Crewels / Embroideries

**COLORS** Green, Orange / Spice, Red  
**DESIGN TYPES** Embroidery, Geometric, Lattice / Fretwork

**SCALE** Medium  
**RAILROADED** Not Railroaded



WIDTH	VERTICAL REPEAT	HORIZONTAL REPEAT	CONTENT
53.00 in (134.62 cm)	5.87 in (14.91 cm)	11.00 in (27.94 cm)	Embroidery: 100% Rayon, Base: 79% Polyester, 13% Cotton, 8% Linen
BACKING	PRODUCT NUMBER	COUNTRY	CLEANING CODES
	9426101	India	S

**ADDITIONAL PRODUCT NOTES**

Embroidered Textiles Are Not, Guaranteed For Precise Color, Matching And Colorfastness., Color Placement Of Embroidery, May Vary. All Measurements, Quoted For Repeats Are, Approximate.