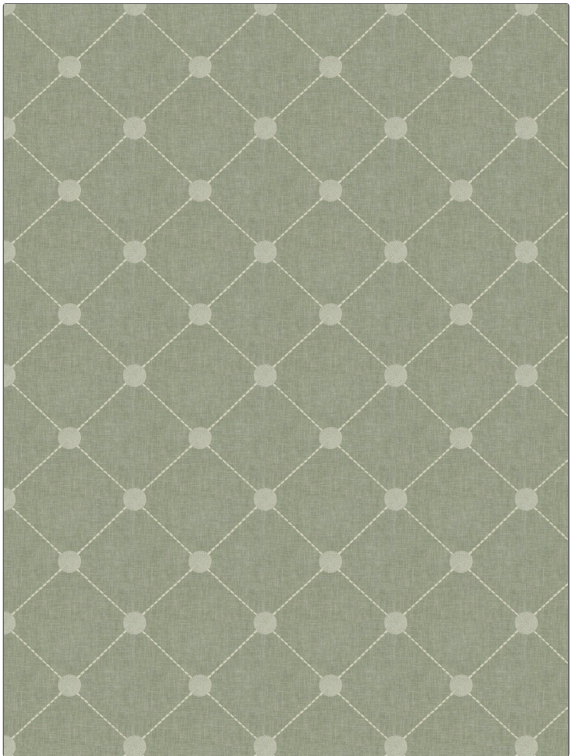


PATTERN	Apollonia
COLOR	Spa

BRAND	APPLICATION
Fabricut	Fabric
USES	CATEGORIES
Bedding, Drapery	Crewels / Embroideries
COLORS	DESIGN TYPES
Aqua / Teal	Embroidery, Diamond
SCALE	RAILROADED
Large	Not Railroaded



WIDTH	VERTICAL REPEAT	HORIZONTAL REPEAT	CONTENT
51.00 in (129.54 cm)	6.25 in (15.88 cm)	6.87 in (17.45 cm)	Embroidery: 100% Polyester, Base: 60% Polyester, 30% Cotton, 10% Linen
BACKING	PRODUCT NUMBER	COUNTRY	CLEANING CODES
	9125802	India	S

ADDITIONAL PRODUCT NOTES
Embroidered Textiles Are Not, Guaranteed For Precise Color, Matching And Colorfastness., Color Placement Of Embroidery, May Vary. All Measurements, Quoted For Repeats Are, Approximate.