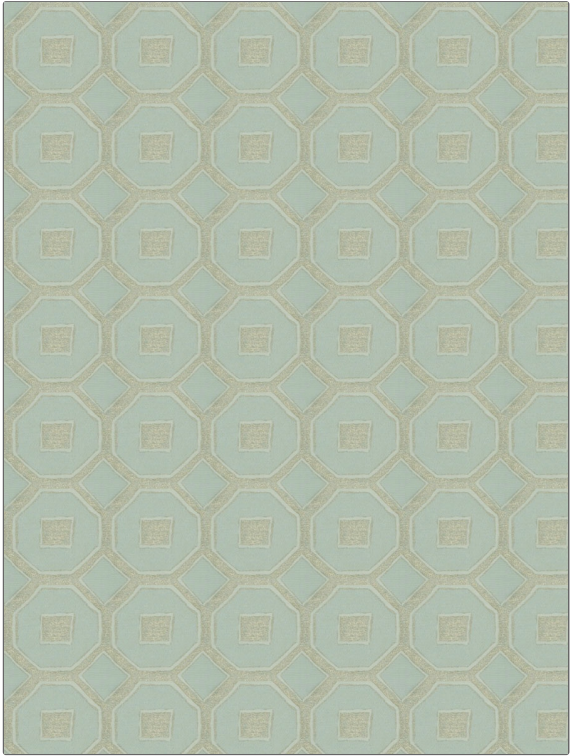


PATTERN Fluorine Shell
COLOR Shimmering Aqua

BRAND	APPLICATION
Fabricut	Fabric
USES	CATEGORIES
Bedding, Drapery, Multipurpose	Wovens
COLORS	DESIGN TYPES
Metallic, Aqua / Teal	Global / Ethnic, Lattice / Fretwork
SCALE	RAILROADED
Large	Not Railroaded



WIDTH	VERTICAL REPEAT	HORIZONTAL REPEAT	CONTENT
54.00 in (137.16 cm)	4.50 in (11.43 cm)	4.75 in (12.06 cm)	39% Polyester, 26% Viscose, 24% Linen, 11% Zari
BACKING	FIRE CODES	DOUBLE RUBS	PRODUCT NUMBER
	UFAC Class I / NFPA 260	Exceeds 21,000 Double Rubs (Wyzenbeek Method)	9083002
COUNTRY	CLEANING CODES		
India	S		

ADDITIONAL PRODUCT NOTES

Ca Tb 117-2013, Exclusive Pattern