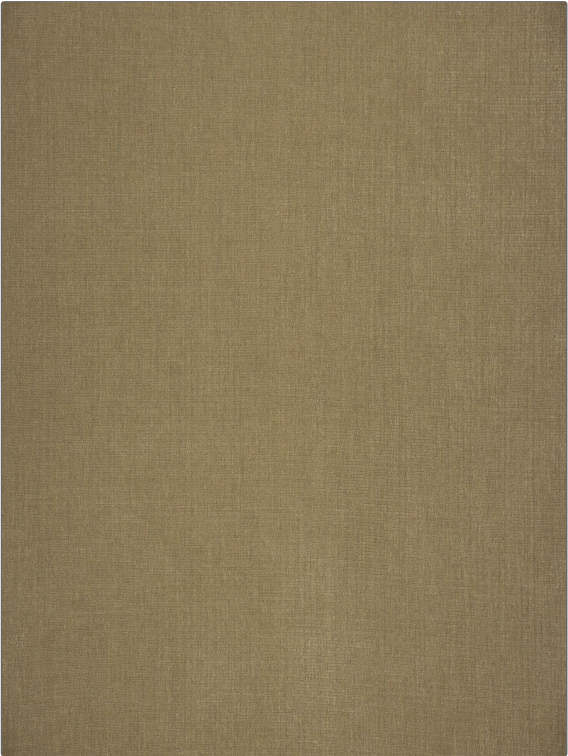


| | |
|---------|----------|
| PATTERN | Key West |
| COLOR | Mocha |

| | |
|----------------|---|
| BRAND | APPLICATION |
| Fabricut | Fabric |
| USES | CATEGORIES |
| Upholstery | Outdoor, Wovens, Solids / Small Scale Patterns, Sunbrella, Chenille |
| COLORS | DESIGN TYPES |
| Taupe / Tan | Texture Plain |
| RAILROADED | |
| Not Railroaded | |



| | | | |
|------------------------|-------------------------------|-------------------------|---|
| WIDTH | FINISH | VERTICAL REPEAT | HORIZONTAL REPEAT |
| 54.00 in (137.16 cm) | Soil & Stain Repellent Finish | 0.00 in (0.00 cm) | 0.00 in (0.00 cm) |
| CONTENT | BACKING | FIRE CODES | DOUBLE RUBS |
| 100% Sunbrella Acrylic | | UFAC Class I / NFPA 260 | Exceeds 15,000 Double Rubs (Wyzenbeek Method) |
| PRODUCT NUMBER | COUNTRY | CLEANING CODES | |
| 9074512 | USA | WS | |

| |
|--|
| ADDITIONAL PRODUCT NOTES |
| Soil & Stain Repellent Finish, Sunbrella, Mildew Resistant, Indoor / Outdoor, 2,200 Hours Light Fastness, Ca Tb 117-2013 |