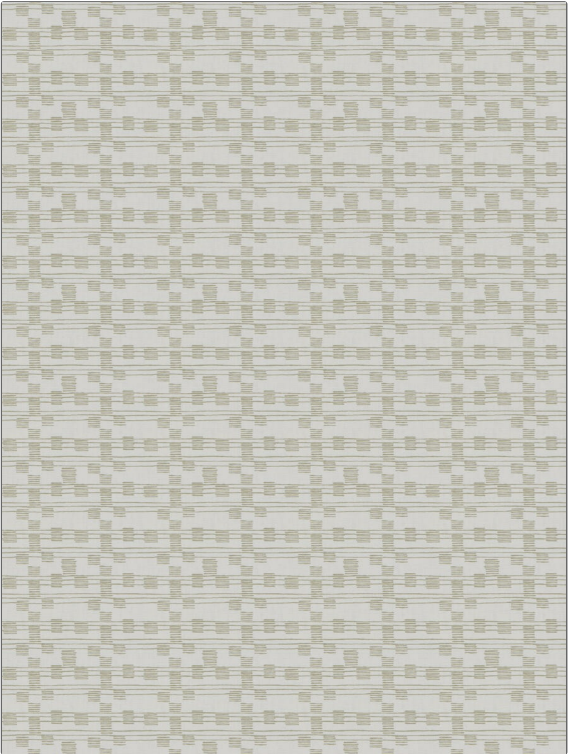


|         |          |
|---------|----------|
| PATTERN | Bar Line |
| COLOR   | Camel    |

|  |             |
|--|-------------|
| BRAND  | APPLICATION |
| Fabricut   | Fabric      |
| USES   | CATEGORIES  |
| Bedding, Drapery, Multipurpose                               | Prints      |
| BOOK   | COLORS      |
| Modern Nuances Vol. III (6 Books) Dune                       | Linen       |
| DESIGN TYPES   | SCALE       |
| Global / Ethnic, Asian, Print Pattern, Contemporary / Modern | Small       |
| RAILOADED  |             |
| Not Railroaded   |             |



|                      |                    |   |                |
|----------------------|--------------------|---|----------------|
| WIDTH                | VERTICAL REPEAT    | HORIZONTAL REPEAT                             | CONTENT        |
| 54.00 in (137.16 cm) | 6.62 in (16.81 cm) | 6.75 in (17.14 cm)                            | 100% Cotton    |
| BACKING              | FIRE CODES         | DOUBLE RUBS                                   | PRODUCT NUMBER |
|                      | UFAC Class I       | Exceeds 35,000 Double Rubs (Wyzenbeek Method) | 9065904        |
| DATE BOOKED          | COUNTRY            | CLEANING CODES                                |                |
| 02/2018              | Spain              | S   |                |

|                          |
|--------------------------|
| ADDITIONAL PRODUCT NOTES |
| Ca Tb 117-2013           |