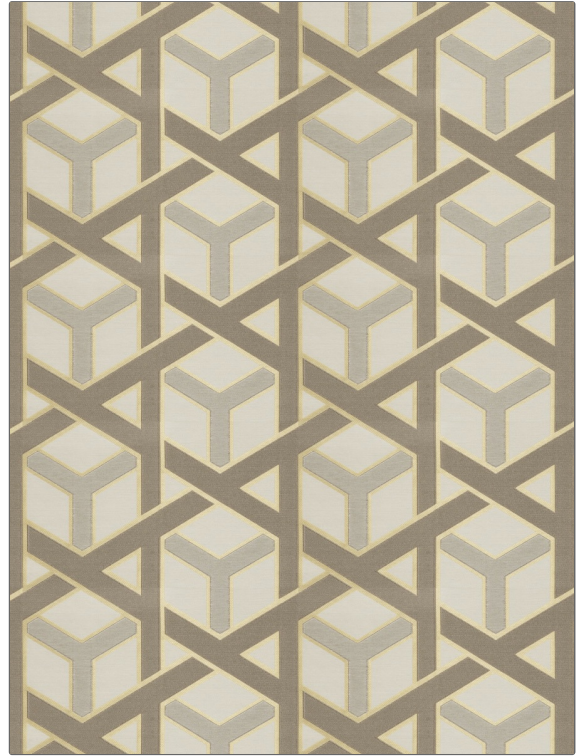


PATTERN **Ather**
COLOR **Gold**

| | |
|---------------------------------------|--|
| BRAND | APPLICATION |
| Fabricut | Fabric |
| USES | CATEGORIES |
| Bedding, Drapery, Multipurpose | Wovens, Faux Silk |
| COLORS | DESIGN TYPES |
| Taupe / Tan, Gold, Yellow | Lattice / Fretwork, Contemporary / Modern |
| SCALE | RAILOADED |
| Medium | Not Railed |



| | | | |
|-----------------------------|--------------------------------|--|-----------------------------------|
| WIDTH | VERTICAL REPEAT | HORIZONTAL REPEAT | CONTENT |
| 47.00 in (119.38 cm) | 9.37 in (23.80 cm) | 13.25 in (33.66 cm) | 62% Polyester, 38% Viscose |
| BACKING | FIRE CODES | DOUBLE RUBS | PRODUCT NUMBER |
| | UFAC Class I / NFPA 260 | Exceeds 36,000 Double Rubs (Wyzenbeek Method) | 8948301 |
| COUNTRY | CLEANING CODES | | |
| India | S | | |

ADDITIONAL PRODUCT NOTES

Ca Tb 117-2013, Exclusive Pattern