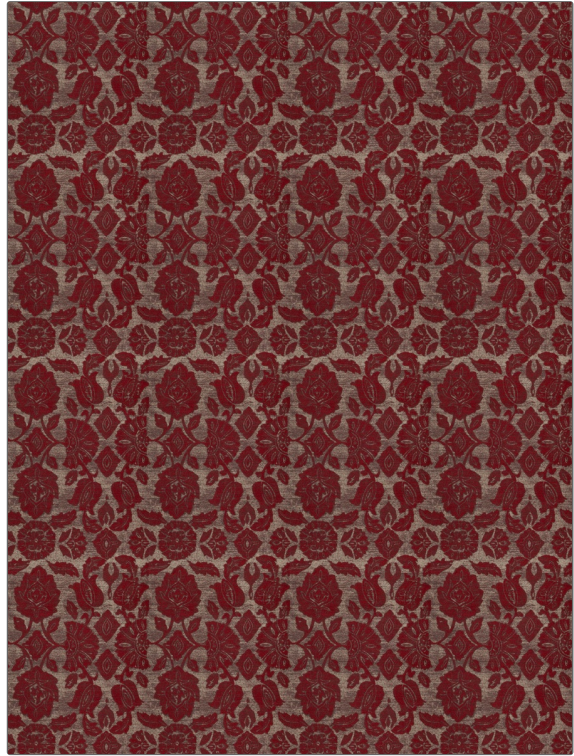


PATTERN	Leitmotif
COLOR	Scarlet

BRAND	APPLICATION
Fabricut	Fabric
USES	CATEGORIES
Bedding, Drapery, Multipurpose	Wovens
COLORS	DESIGN TYPES
Red	Floral, Jacquard Pattern, Damask
SCALE	RAILOADED
Medium	Not Railroaded



WIDTH	VERTICAL REPEAT	HORIZONTAL REPEAT	CONTENT
54.00 in (137.16 cm)	19.50 in (49.53 cm)	13.50 in (34.29 cm)	74% Viscose, 14% Polyester, 12% Linen
BACKING	FIRE CODES	DOUBLE RUBS	PRODUCT NUMBER
	UFAC Class I / NFPA 260	Exceeds 20,000 Double Rubs (Wyzenbeek Method)	8663302
COUNTRY	CLEANING CODES		
India	S		

ADDITIONAL PRODUCT NOTES
Ca Tb 117-2013, Exclusive Pattern