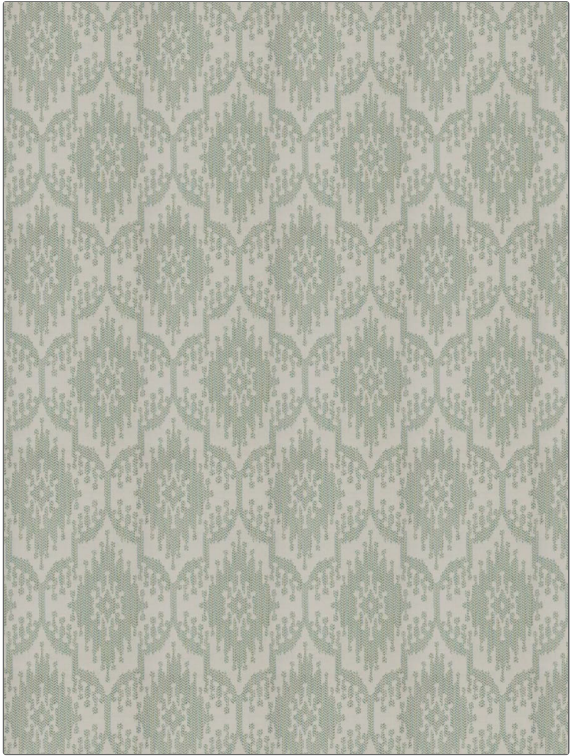


**PATTERN** Cinematography  
**COLOR** 02

<b>BRAND</b>	<b>APPLICATION</b>
Fabricut	Fabric
<b>USES</b>	<b>CATEGORIES</b>
Bedding, Upholstery	Wovens
<b>COLORS</b>	<b>DESIGN TYPES</b>
Aqua / Teal	Global / Ethnic, Medallion, Damask
<b>SCALE</b>	<b>RAILOADED</b>
Large	Not Railed



<b>WIDTH</b>	<b>VERTICAL REPEAT</b>	<b>HORIZONTAL REPEAT</b>	<b>CONTENT</b>
51.00 in (129.54 cm)	22.50 in (57.15 cm)	12.62 in (32.05 cm)	53% Polyester, 39% Cotton, 4% Viscose, 4% Linen
<b>BACKING</b>	<b>FIRE CODES</b>	<b>DOUBLE RUBS</b>	<b>PRODUCT NUMBER</b>
	UFAC Class I	Exceeds 45,000 Double Rubs (Wyzenbeek Method)	8641202
<b>COUNTRY</b>	<b>CLEANING CODES</b>		
India	S		

**ADDITIONAL PRODUCT NOTES**

Ca Tb 117-2013