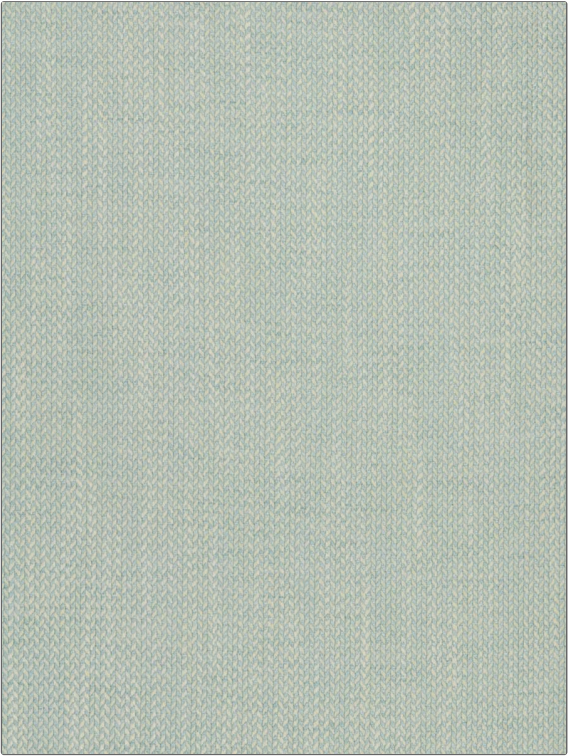


PATTERN	Winton
COLOR	Rain

BRAND	APPLICATION
Fabricut	Fabric
USES	CATEGORIES
Bedding, Drapery, Multipurpose	Wovens
COLORS	DESIGN TYPES
Aqua / Teal	Herringbone, Small Scale Woven
SCALE	RAILROADED
Small	Not Railroaded



WIDTH	VERTICAL REPEAT	HORIZONTAL REPEAT	CONTENT
54.00 in (137.16 cm)	0.25 in (0.64 cm)	0.25 in (0.64 cm)	100% Polyester
BACKING	FIRE CODES	DOUBLE RUBS	PRODUCT NUMBER
	UFAC Class I	Exceeds 51,000 Double Rubs (Wyzenbeek Method)	8621711
COUNTRY	CLEANING CODES		
India	S		

ADDITIONAL PRODUCT NOTES
Ca Tb 117-2013