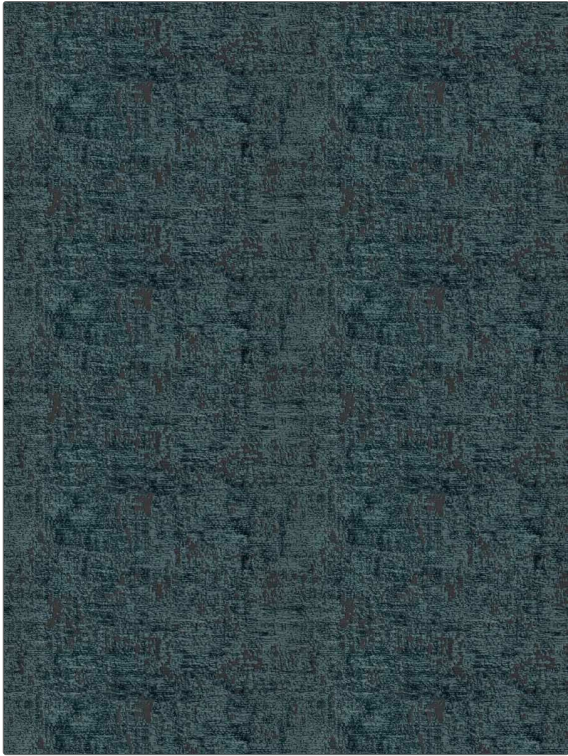


**PATTERN** Thanda  
**COLOR** Teal

<b>BRAND</b>	<b>APPLICATION</b>
Fabricut	Fabric
<b>USES</b>	<b>CATEGORIES</b>
Upholstery	Wovens, Chenille
<b>BOOK</b>	<b>COLORS</b>
Luxe Home Ocean / Ink	Aqua / Teal
<b>DESIGN TYPES</b>	<b>RAILROADED</b>
Texture Plain, Abstract	Not Railroaded



<b>WIDTH</b>	<b>VERTICAL REPEAT</b>	<b>HORIZONTAL REPEAT</b>	<b>CONTENT</b>
54.00 in (137.16 cm)	9.87 in (25.07 cm)	14.00 in (35.56 cm)	68% Viscose, 23% Polyester, 9% Cotton
<b>BACKING</b>	<b>FIRE CODES</b>	<b>DOUBLE RUBS</b>	<b>PRODUCT NUMBER</b>
	UFAC Class I / NFPA 260	Exceeds 24,000 Double Rubs (Wyzenbeek Method)	8389902
<b>DATE BOOKED</b>	<b>COUNTRY</b>	<b>CLEANING CODES</b>	
04/2023	Turkey	S	

**ADDITIONAL PRODUCT NOTES**

Ca Tb 117-2013, Exclusive Pattern