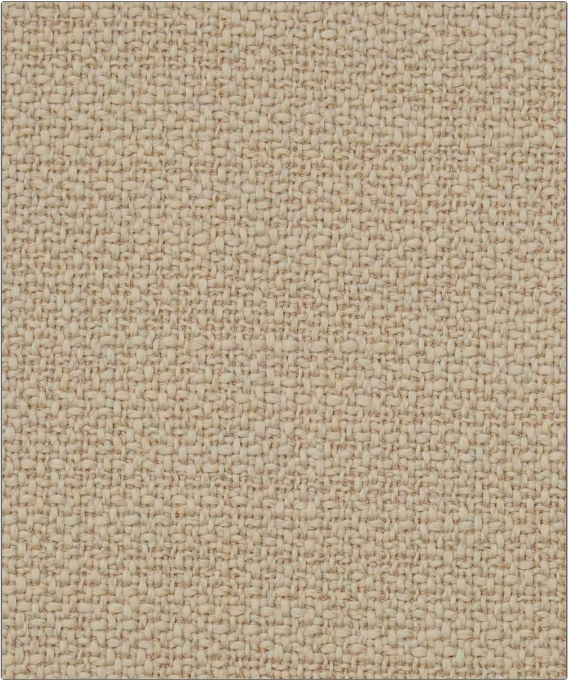


| | |
|---------|------------|
| PATTERN | Reef Plain |
| COLOR | Linen |

| | |
|--|--|
| BRAND | APPLICATION |
| Liberty of London | Fabric |
| USES | CATEGORIES |
| Bedding, Drapery, Multipurpose, Upholstery | Outdoor, Wovens, Solids / Small Scale Patterns |
| BOOK | COLORS |
| LOL The Liberty Garden Indoor / Outdoor | Linen |
| DESIGN TYPES | RAILROADED |
| Texture Plain | Not Railroaded |



| | | | |
|----------------------|-------------------------|----------------------------|------------------------------------|
| WIDTH | VERTICAL REPEAT | HORIZONTAL REPEAT | CONTENT |
| 55.00 in (139.70 cm) | 0.00 in (0.00 cm) | 0.00 in (0.00 cm) | 63% Polypropylene, 37% Polyacrylic |
| BACKING | FIRE CODES | DOUBLE RUBS | PRODUCT NUMBER |
| | UFAC Class I / NFPA 260 | Exceeds 40,000 Double Rubs | 8160304 |
| DATE BOOKED | COUNTRY | CLEANING CODES | |
| 05/2021 | Italy | S, WASHABLE | |

| |
|---|
| ADDITIONAL PRODUCT NOTES |
| Passes 40,000 Martindale Tst, Indoor / Outdoor, Ca Tb 117-2013, Exclusive Pattern, Washable |