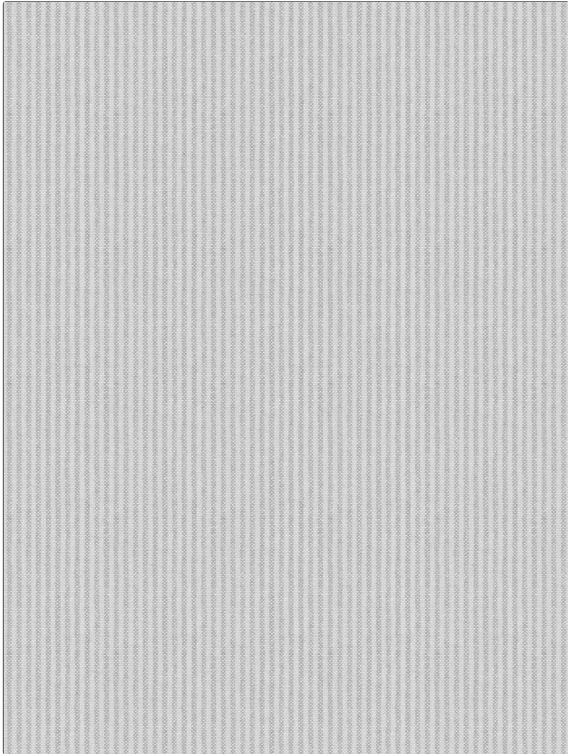


# FABRICUT<sup>®</sup> Fabric Product Details

<b>PATTERN</b>	<b>Bitterroot</b>
<b>COLOR</b>	<b>Dove</b>
<b>BRAND</b>	<b>APPLICATION</b>
<b>Fabricut</b>	<b>Fabric</b>
<b>USES</b>	<b>CATEGORIES</b>
<b>Bedding, Drapery, Multipurpose, Upholstery</b>	<b>Wovens</b>
<b>BOOK</b>	<b>COLORS</b>
<b>Avalon Lane</b>	<b>Grey</b>
<b>DESIGN TYPES</b>	<b>SCALE</b>
<b>Stripes</b>	<b>Small</b>
<b>RAILOADED</b>	
<b>Not Railroaded</b>	



<b>WIDTH</b>	<b>VERTICAL REPEAT</b>	<b>HORIZONTAL REPEAT</b>	<b>CONTENT</b>
<b>54.00 in (137.16 cm)</b>	<b>0.00 in (0.00 cm)</b>	<b>0.12 in (0.30 cm)</b>	<b>55% Linen, 45% Cotton</b>
<b>BACKING</b>	<b>FIRE CODES</b>	<b>DOUBLE RUBS</b>	<b>PRODUCT NUMBER</b>
	<b>UFAC Class I</b>	<b>Exceeds 21,000 Double Rubs (Wyzenbeek Method)</b>	<b>8105404</b>
<b>DATE BOOKED</b>	<b>COUNTRY</b>	<b>CLEANING CODES</b>	
<b>11/2022</b>	<b>China</b>	<b>S</b>	

<b>ADDITIONAL PRODUCT NOTES</b>
<b>Ca Tb 117-2013, Sand Washed</b>