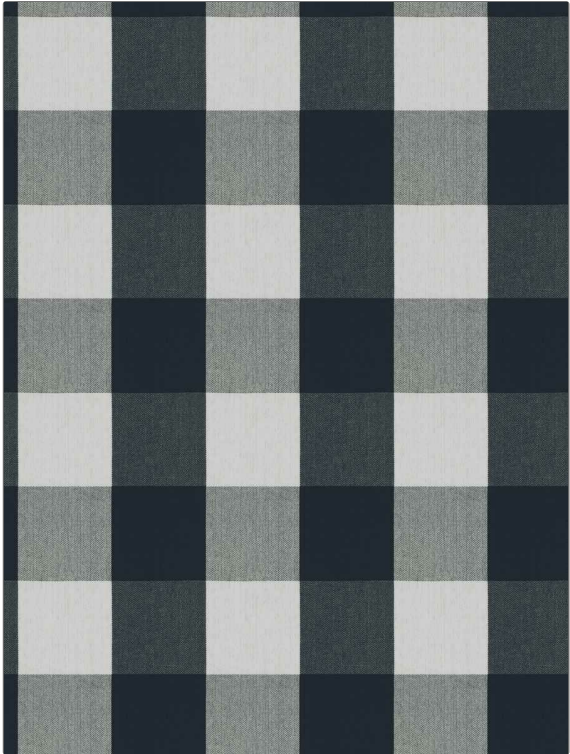


**PATTERN** Milia  
**COLOR** Ink

<b>BRAND</b>	<b>APPLICATION</b>
Fabricut	Fabric
<b>USES</b>	<b>CATEGORIES</b>
Bedding, Drapery, Multipurpose, Upholstery	Wovens
<b>BOOK</b>	<b>COLORS</b>
Avalon Lane	Navy
<b>DESIGN TYPES</b>	<b>SCALE</b>
Check / Plaid	Large
<b>RAILROADED</b>	
Not Railroaded	



<b>WIDTH</b>	<b>VERTICAL REPEAT</b>	<b>HORIZONTAL REPEAT</b>	<b>CONTENT</b>
55.00 in (139.70 cm)	9.00 in (22.86 cm)	9.00 in (22.86 cm)	100% Cotton
<b>BACKING</b>	<b>FIRE CODES</b>	<b>DOUBLE RUBS</b>	<b>PRODUCT NUMBER</b>
	UFAC Class I / NFPA 260	Exceeds 12,500 Double Rubs (Wyzenbeek Method)	8102001
<b>DATE BOOKED</b>	<b>COUNTRY</b>	<b>CLEANING CODES</b>	
11/2022	India	S	

**ADDITIONAL PRODUCT NOTES**

Ca Tb 117-2013