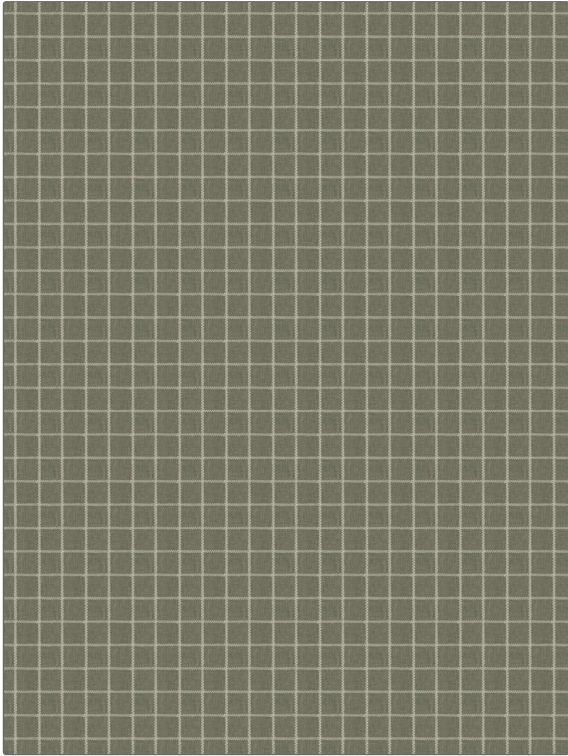


PATTERN Erebus
COLOR Sage

BRAND	APPLICATION
Fabricut	Fabric
USES	CATEGORIES
Bedding, Drapery, Multipurpose	Wovens
BOOK	COLORS
Natural Layers (4 Books) Cedar Sage	Green
DESIGN TYPES	SCALE
Check / Plaid	Small
RAILROADED	
Not Railroaded	



WIDTH	VERTICAL REPEAT	HORIZONTAL REPEAT	CONTENT
54.00 in (137.16 cm)	1.00 in (2.54 cm)	1.12 in (2.84 cm)	39% Polyester, 38% Cotton, 16% Rayon, 7% Linen
BACKING	FIRE CODES	DOUBLE RUBS	PRODUCT NUMBER
	UFAC Class I / NFPA 260	Exceeds 20,000 Double Rubs (Wyzenbeek Method)	8073506
DATE BOOKED	COUNTRY	CLEANING CODES	
07/2022	India	S	

ADDITIONAL PRODUCT NOTES

Ca Tb 117-2013, Exclusive Pattern