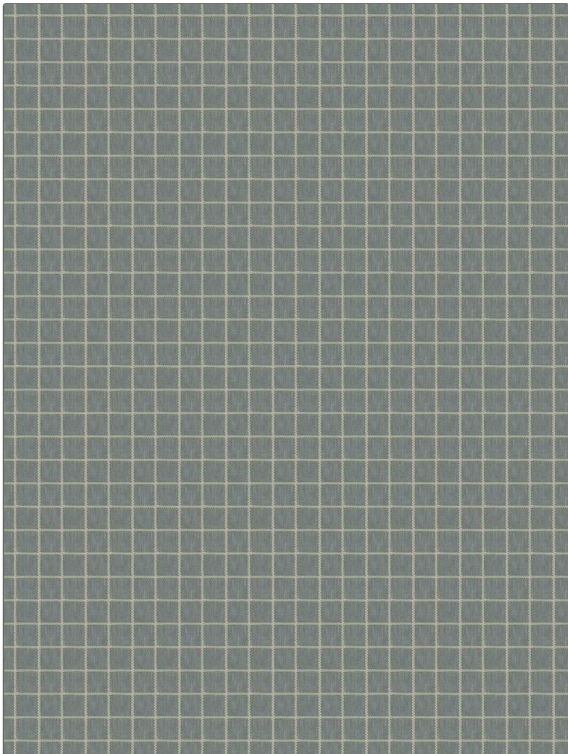


<b>PATTERN</b>	<b>Erebus</b>
<b>COLOR</b>	<b>Chambray</b>
<b>BRAND</b>	<b>APPLICATION</b>
<b>Fabricut</b>	<b>Fabric</b>
<b>USES</b>	<b>CATEGORIES</b>
<b>Bedding, Drapery, Multipurpose</b>	<b>Wovens</b>
<b>BOOK</b>	<b>COLORS</b>
<b>Natural Layers (4 Books) Horizon</b>	<b>Blue</b>
<b>DESIGN TYPES</b>	<b>SCALE</b>
<b>Check / Plaid</b>	<b>Small</b>
<b>RAILROADED</b>	
<b>Not Railroaded</b>	



<b>WIDTH</b>	<b>VERTICAL REPEAT</b>	<b>HORIZONTAL REPEAT</b>	<b>CONTENT</b>
<b>54.00 in (137.16 cm)</b>	<b>1.00 in (2.54 cm)</b>	<b>1.12 in (2.84 cm)</b>	<b>39% Polyester, 38% Cotton, 16% Rayon, 7% Linen</b>
<b>BACKING</b>	<b>FIRE CODES</b>	<b>DOUBLE RUBS</b>	<b>PRODUCT NUMBER</b>
	<b>UFAC Class I / NFPA 260</b>	<b>Exceeds 20,000 Double Rubs (Wyzenbeek Method)</b>	<b>8073505</b>
<b>DATE BOOKED</b>	<b>COUNTRY</b>	<b>CLEANING CODES</b>	
<b>07/2022</b>	<b>India</b>	<b>S</b>	

<b>ADDITIONAL PRODUCT NOTES</b>
<b>Ca Tb 117-2013, Exclusive Pattern</b>