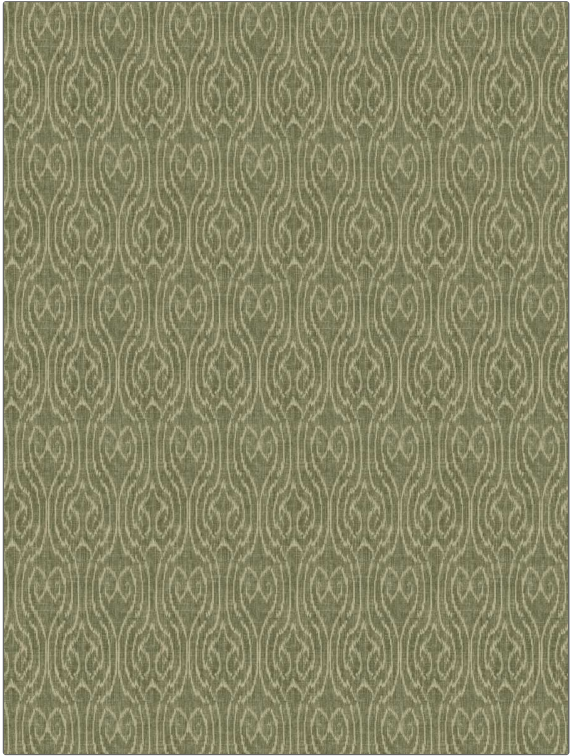


**PATTERN** Tabora  
**COLOR** Forest

<b>BRAND</b>	<b>APPLICATION</b>
Fabricut	Fabric
<b>USES</b>	<b>CATEGORIES</b>
Bedding, Drapery, Multipurpose	Prints
<b>BOOK</b>	<b>COLORS</b>
Natural Layers (4 Books) Cedar Sage	Green
<b>DESIGN TYPES</b>	<b>SCALE</b>
Global / Ethnic, Print Pattern	Medium
<b>RAILROADED</b>	
Not Railroaded	



<b>WIDTH</b>	<b>VERTICAL REPEAT</b>	<b>HORIZONTAL REPEAT</b>	<b>CONTENT</b>
54.00 in (137.16 cm)	27.00 in (68.58 cm)	13.50 in (34.29 cm)	36% Polyester, 26% Cotton, 22% Viscose, 16% Linen
<b>BACKING</b>	<b>FIRE CODES</b>	<b>DOUBLE RUBS</b>	<b>PRODUCT NUMBER</b>
	UFAC Class I	Exceeds 15,000 Double Rubs (Wyzenbeek Method)	8071902
<b>DATE BOOKED</b>	<b>COUNTRY</b>	<b>CLEANING CODES</b>	
07/2022	China	S	

**ADDITIONAL PRODUCT NOTES**

Ca Tb 117-2013