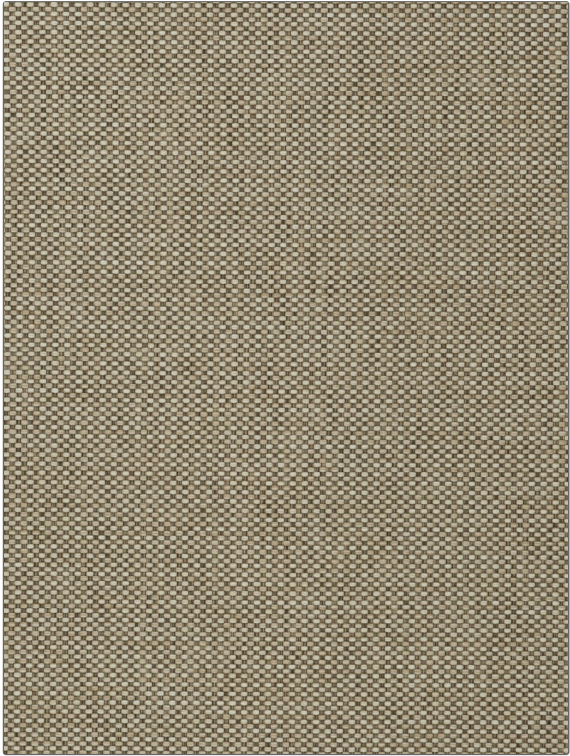


PATTERN Moonstone
COLOR 03



BRAND	APPLICATION
Fabricut	Fabric
USES	CATEGORIES
Upholstery	Wovens, Solids / Small Scale Patterns
COLORS	DESIGN TYPES
Beige, Taupe / Tan	Solid, Texture Plain
RAILROADED	
Not Railroaded	

WIDTH	VERTICAL REPEAT	HORIZONTAL REPEAT	CONTENT
54.00 in (137.16 cm)	0.00 in (0.00 cm)	0.00 in (0.00 cm)	100% Polyester
BACKING	FIRE CODES	DOUBLE RUBS	PRODUCT NUMBER
	UFAC Class I / NFPA 260, Passes MVS 302	Exceeds 140,000 Double Rubs (Wyzenbeek Method)	8035803
COUNTRY	CLEANING CODES		
India	S		

ADDITIONAL PRODUCT NOTES

Passes 99,999 Martindale Tst, Oeko Tex Standard 100, Ca Tb 117-2013, Exclusive Pattern, Eco / Environment Plus