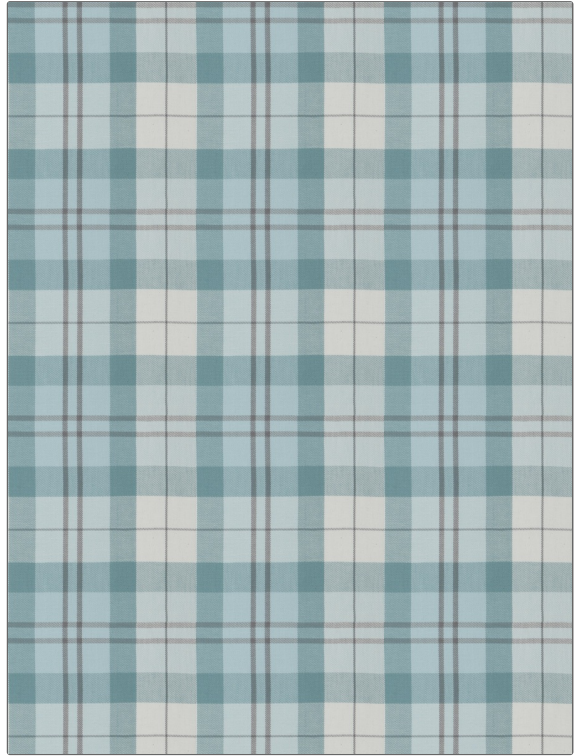


| | |
|----------------|------------------|
| PATTERN | Hix Plaid |
| COLOR | 04 |

| | |
|---------------------------------------|-----------------------|
| BRAND | APPLICATION |
| Fabricut | Fabric |
| USES | CATEGORIES |
| Bedding, Drapery, Multipurpose | Wovens |
| COLORS | DESIGN TYPES |
| Aqua / Teal | Check / Plaid |
| SCALE | RAILROADED |
| Medium | Not Railroaded |



| | | | |
|-----------------------------|--|--------------------------------|--|
| WIDTH | FINISH | VERTICAL REPEAT | HORIZONTAL REPEAT |
| 54.00 in (137.16 cm) | Soil & Stain Repellent Finish | 10.00 in (25.40 cm) | 9.00 in (22.86 cm) |
| CONTENT | BACKING | FIRE CODES | DOUBLE RUBS |
| 100% Cotton | | UFAC Class I / NFPA 260 | Exceeds 20,000 Double Rubs (Wyzenbeek Method) |
| PRODUCT NUMBER | COUNTRY | CLEANING CODES | |
| 7728104 | India | S | |

| |
|--|
| ADDITIONAL PRODUCT NOTES |
| Soil & Stain Repellent Finish, Ca Tb 117-2013 |