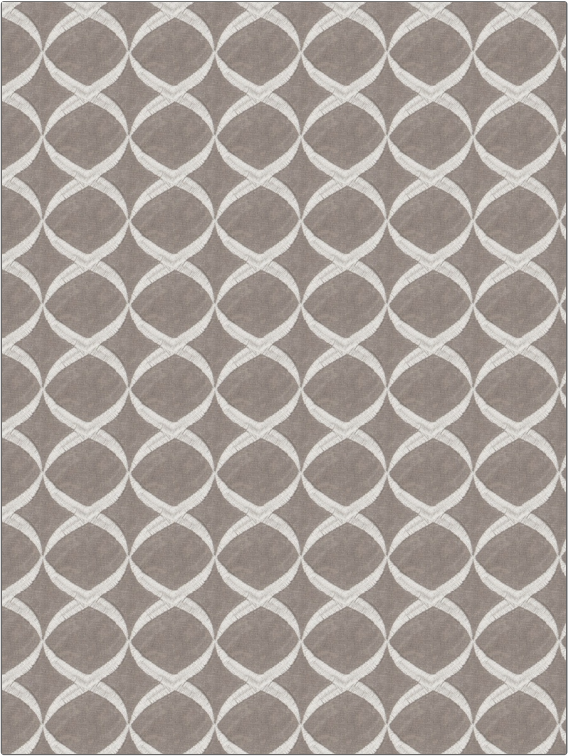


PATTERN	Birim Interlock
COLOR	Snow

BRAND	APPLICATION
Fabricut	Fabric
USES	CATEGORIES
Drapery	Sheer, Crewels / Embroideries
COLORS	DESIGN TYPES
White	Lattice / Fretwork, Bargello, Ogee
SCALE	RAILROADED
Small	Not Railroaded



WIDTH	VERTICAL REPEAT	HORIZONTAL REPEAT	CONTENT
52.00 in (132.08 cm)	2.12 in (5.38 cm)	4.12 in (10.46 cm)	Embroidery: 100% Polyester, Base: 100% Polyester
BACKING	PRODUCT NUMBER	COUNTRY	CLEANING CODES
	7597101	India	S

ADDITIONAL PRODUCT NOTES
Embroidered Textiles Are Not, Guaranteed For Precise Color, Matching And Colorfastness., Color Placement Of Embroidery, May Vary. All Measurements, Quoted For Repeats Are, Approximate.