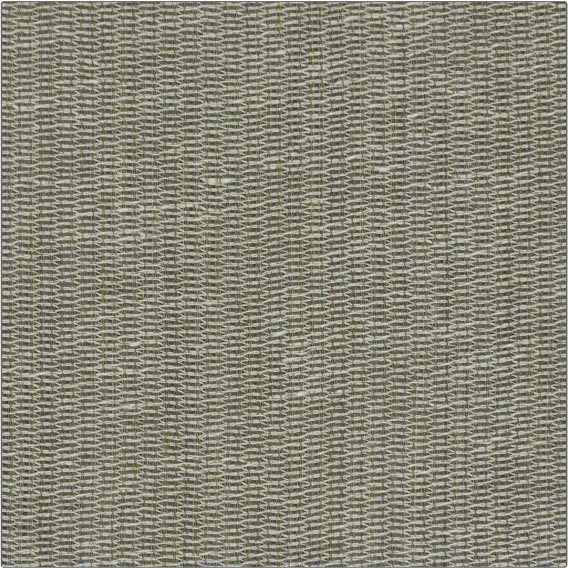


PATTERN	Bonnieux
COLOR	Salvia

BRAND	APPLICATION
Decortex	Fabric
USES	CATEGORIES
Drapery	Wide Width, Wool / Faux Wool, Solids / Small Scale Patterns, Linen
BOOK	COLORS
Decortex Firenze 2021	Taupe / Tan
DESIGN TYPES	RAILROADED
Solid	Railroaded



WIDTH	VERTICAL REPEAT	HORIZONTAL REPEAT	CONTENT
122.00 in (309.88 cm)	0.00 in (0.00 cm)	0.00 in (0.00 cm)	60% Linen, 40% Wool
BACKING	PRODUCT NUMBER	DATE BOOKED	COUNTRY
	7001402	03/2022	Italy
CLEANING CODES			
S			

ADDITIONAL PRODUCT NOTES
Shown Railroaded