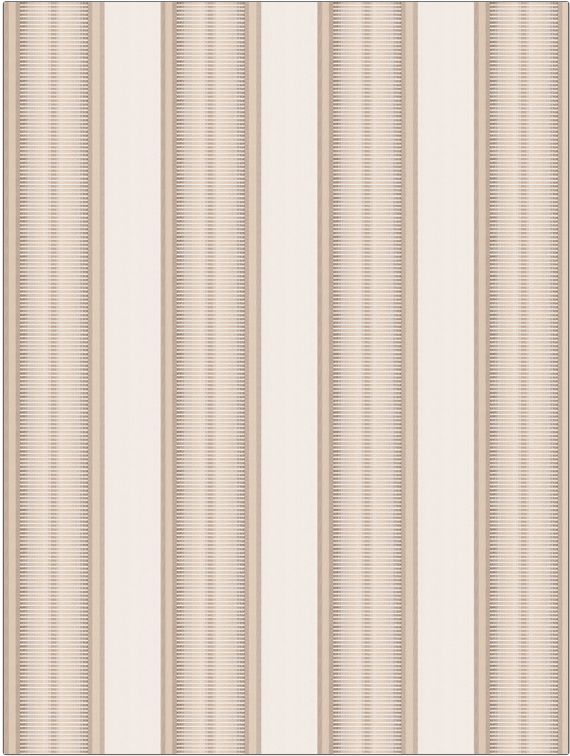


# Fabric Product Details

**PATTERN** **Sunset Stripe**  
**COLOR** **Aspen**

<b>BRAND</b>	<b>APPLICATION</b>
<b>Fabricut</b>	<b>Fabric</b>
<b>USES</b>	<b>CATEGORIES</b>
<b>Upholstery</b>	<b>Outdoor, Outdoor, Wovens, Wovens, Sunbrella</b>
<b>BOOK</b>	<b>COLORS</b>
<b>Kendall Wilkinson Sand Dune</b>	<b>Taupe / Tan, Off White / Ivory</b>
<b>DESIGN TYPES</b>	<b>SCALE</b>
<b>Jacquard Pattern, Stripes</b>	<b>Large</b>
<b>RAILROADED</b>	
<b>Railroaded</b>	



<b>WIDTH</b>	<b>FINISH</b>	<b>VERTICAL REPEAT</b>	<b>HORIZONTAL REPEAT</b>
<b>54.00 in (137.16 cm)</b>	<b>Soil &amp; Stain Repellent Finish</b>	<b>0.13 in (0.33 cm)</b>	<b>7.50 in (19.05 cm)</b>
<b>CONTENT</b>	<b>FIRE CODES</b>	<b>DOUBLE RUBS</b>	<b>PRODUCT NUMBER</b>
<b>100% Sunbrella Acrylic</b>	<b>Cal Tb 117-2013, UFAC Class I / NFPA 260</b>	<b>Exceeds 12,000 Double Rubs (Wyzenbeek Method)</b>	<b>6671508</b>
<b>DATE BOOKED</b>	<b>COUNTRY</b>	<b>CLEANING CODES</b>	
<b>04/2016</b>	<b>USA</b>	<b>WS</b>	

**ADDITIONAL PRODUCT NOTES**

**Soil & Stain Repellent Finish, Sunbrella, Mildew Resistant, Indoor / Outdoor, 2,200 Hours Light Fastness, Shown Railroaded, Exclusive Pattern**