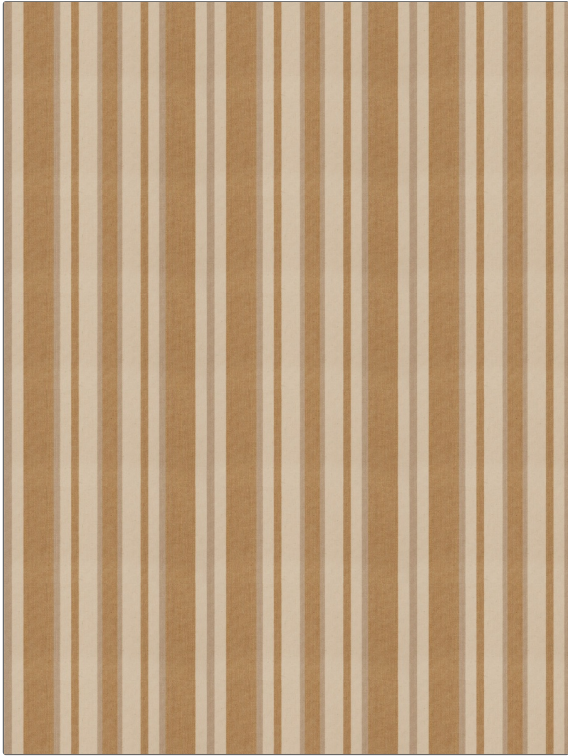


PATTERN Tippet
COLOR Chestnut

BRAND	APPLICATION
Fabricut	Fabric
USES	CATEGORIES
Bedding, Drapery, Multipurpose	Wovens, Linen
COLORS	DESIGN TYPES
Brown	Stripes
SCALE	RAILROADED
Medium	Not Railroaded



WIDTH	VERTICAL REPEAT	HORIZONTAL REPEAT	CONTENT
55.00 in (139.70 cm)	0.00 in (0.00 cm)	14.25 in (36.20 cm)	53% Polyester, 29% Linen, 18% Cotton
BACKING	FIRE CODES	DOUBLE RUBS	PRODUCT NUMBER
	UFAC Class I / NFPA 260	Exceeds 21,000 Double Rubs (Wyzenbeek Method)	6545803
COUNTRY	CLEANING CODES		
China	S		

ADDITIONAL PRODUCT NOTES

Ca Tb 117-2013, Exclusive Pattern